

Joint Stock Company “Conexus Baltic Grid”
(hereafter – AS “Conexus Baltic Grid” or the Company)
Legal address: Stigu street 14. Riga. LV-1021
Phone number: +371 67 087 900
E-mail address: info@conexus.lv

**Application for the intended activity of the
construction of the Nordic-Baltic Hydrogen
Corridor in the territory of Latvia**

Riga, June 2026

In accordance with Article 4 of the Law “On Environmental Impact Assessment” and Annex 1, Paragraph 8, Subparagraph 1, and Paragraph 2 of Cabinet of Ministers Regulation No. 18 of 13 January 2015 “Procedures for assessing the environmental impact of intended activity and accepting the intended activity”

Name of the Initiator: AS “Conexus Baltic Grid”

Registration number: 40203041605

Legal address: Stigu iela 14, Rīga, LV-1021

E-mail address: info@conexus.lv

Contact person: Alvīne Zavicka, alvine.zavicka@conexus.lv

1. Name of the intended activity

Construction of the Nordic–Baltic Hydrogen Corridor in the territory of Latvia

2. Information of the intended activity

The Intended Activity is the construction of the Nordic–Baltic Hydrogen Corridor within the territory of Latvia, crossing the territories of ten municipalities. This corridor will constitute an integral component of a broader Northern European hydrogen infrastructure network, ensuring interconnections with neighbouring countries and enabling efficient energy transmission within the region.

The Nordic–Baltic Hydrogen Corridor (hereinafter – the Project) is a cross-border energy infrastructure initiative intended to establish a regional hydrogen transmission corridor directly connecting Finland, Estonia, Latvia, Lithuania, Poland, and Germany. The Project envisages the development of large-scale hydrogen pipeline infrastructure connecting potential renewable hydrogen production centres in Northern Europe with industrial demand centres in Central Europe.

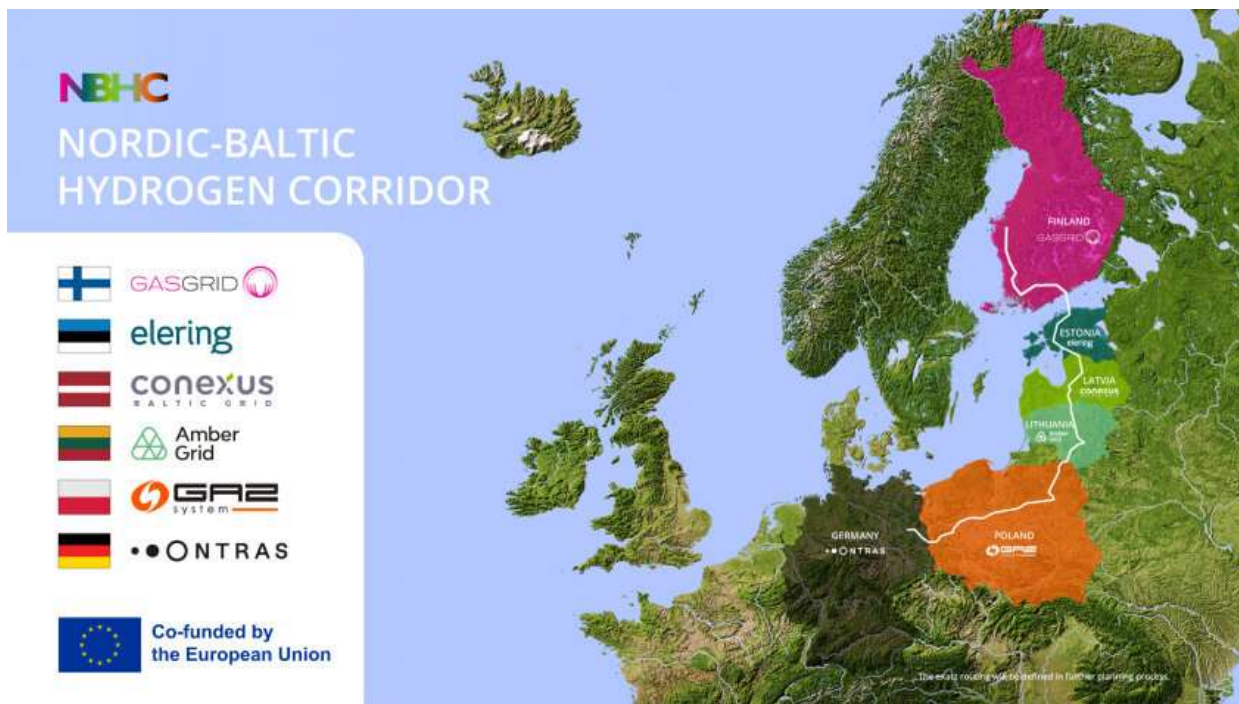


Figure 1. Location of the intended Nordic–Baltic Hydrogen Corridor¹

¹ The official webpage of the Nordic–Baltic Hydrogen Corridor: <https://www.nordicbaltichydrogenridor.com/>

The development of the Project is a significant prerequisite for the establishment and integration of the renewable and low-carbon hydrogen market into the European energy system. The Project promotes the use of hydrogen in the industrial, transport, and energy sectors, particularly in segments facing significant decarbonisation challenges.

The Nordic–Baltic Hydrogen Corridor forms part of a broader European strategic initiative – the development of European hydrogen infrastructure, the so-called “*Hydrogen Backbone*”. This approach envisages the gradual development of an integrated hydrogen network across Europe, connecting production and consumption centres, diversifying energy supply sources and enhancing energy security.

The Project implements the European Union Hydrogen Strategy and the *REPowerEU* Plan, while also contributing to the achievement of various regional and European climate objectives. The Project has been included in the list of Projects of Common Interest pursuant to Regulation (EU) 2022/869 of the European Parliament and of the Council of 30 May 2022 on guidelines for trans-European energy infrastructure, amending Regulations (EC) No 715/2009, (EU) 2019/942 and (EU) 2019/943 and Directives 2009/73/EC and (EU) 2019/944, and repealing Regulation (EU) No 347/2013 (Annex VII, Section B, point 11.2), thereby confirming its significance in climate change mitigation and in achieving the European Union’s 2030 climate and energy targets, as well as the 2050 climate neutrality objectives. The Project is also included in the updated National Energy and Climate Plan of Latvia for 2021–2030 (Section 3.4.2.9) as a significant energy transmission and distribution infrastructure development measure intended to support the implementation of long-term energy and climate policy objectives, including those extending to 2035.

The total planned length of the pipeline is approximately 2,500 kilometres. The infrastructure will include a high-pressure pipeline system with compressor stations and the possibility of establishing connection points to national transmission networks.

The Project development process was initiated with a pre-feasibility phase in 2024, during which technical, economic and regulatory preconditions for the implementation of the corridor were assessed. The subsequent detailed study and planning phase commenced in 2025 and will continue until mid-2027. According to current estimates, construction works could begin after 2029, with the objective of commissioning the infrastructure in 2033.

It is projected that by 2040 the Project will be capable of transporting up to 2.7 million tonnes of renewable hydrogen per year. In the long term, by 2050, the implementation of the project could contribute to a reduction of greenhouse gas emissions by up to 37 million tonnes of CO₂ equivalent per year, while simultaneously improving security of supply and promoting the development of sustainable energy in the region.

2.1. Information about possible locations of the intended activity

In Latvia, the study area of the Nordic–Baltic Hydrogen Corridor is planned to cross the territories of ten municipalities: Valmiera, Smiltene, Valka, Cēsis, Sigulda, Saulkrasti, Ropaži, Salaspils, Ķekava, and Bauska. The total length of the corridor within the territory of Latvia is planned to be approximately 270–300 km, depending on the selected pipeline alignment and the interconnection point with Estonia (see Figure 2). The list of land parcels traversed by the hydrogen pipeline study corridor, together with the study area itself, is presented in an online map. The map is available [here](#).

The Intended Activity complies with Annex 1, Article 22, Sub-paragraph 1 of the Law “On Environmental Impact Assessment” – “Pipelines with a diameter exceeding 800 millimetres and a length of 40 kilometres: 1. for the transportation of oil, gas and chemical products”.

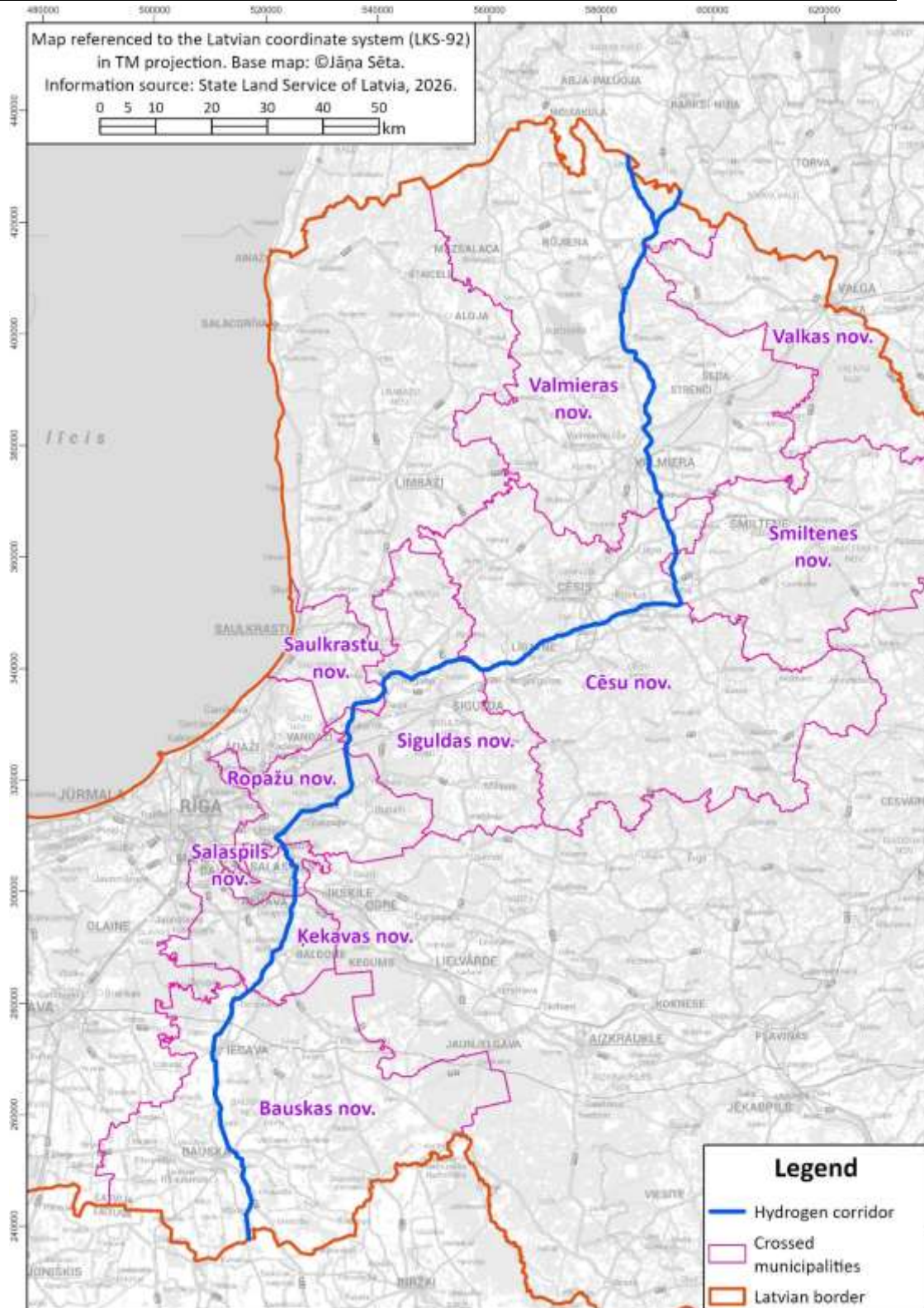


Figure 2. Location of the Nordic–Baltic Hydrogen Corridor in Latvia

The planned hydrogen pipeline is intended to be constructed parallel to the existing natural gas transmission pipeline, maintaining a minimum distance of approximately 15 metres between the pipeline axes. This technical solution allows the use of an already established infrastructure

corridor, thereby reducing the need for the development of new route corridors and the associated impacts on affected properties and the environment.

During the preparation of the Environmental Impact Assessment (hereinafter – EIA), two interconnection alternatives with Estonia and their alignment options will be evaluated. Alternative 1 envisages the construction of the pipeline connection with Estonia parallel to the existing natural gas transmission pipeline, similarly to the planned main pipeline route. Alternative 2 envisages the construction of the route within a new corridor – from the settlement of Mirķi in Valmiera municipality to the Estonian border near the village of Lode in Valmiera municipality. The exact interconnection point with Estonia will be determined during the EIA process. Both planned hydrogen pipeline alignment alternatives are shown in Figure 3.

In previous project activities, AS “Conexus Baltic Grid” has conceptually agreed with the project partner in Lithuania, AB “Amber Grid”, on a preliminary area of the interconnection point (south of Uzvara village in Bauska municipality).

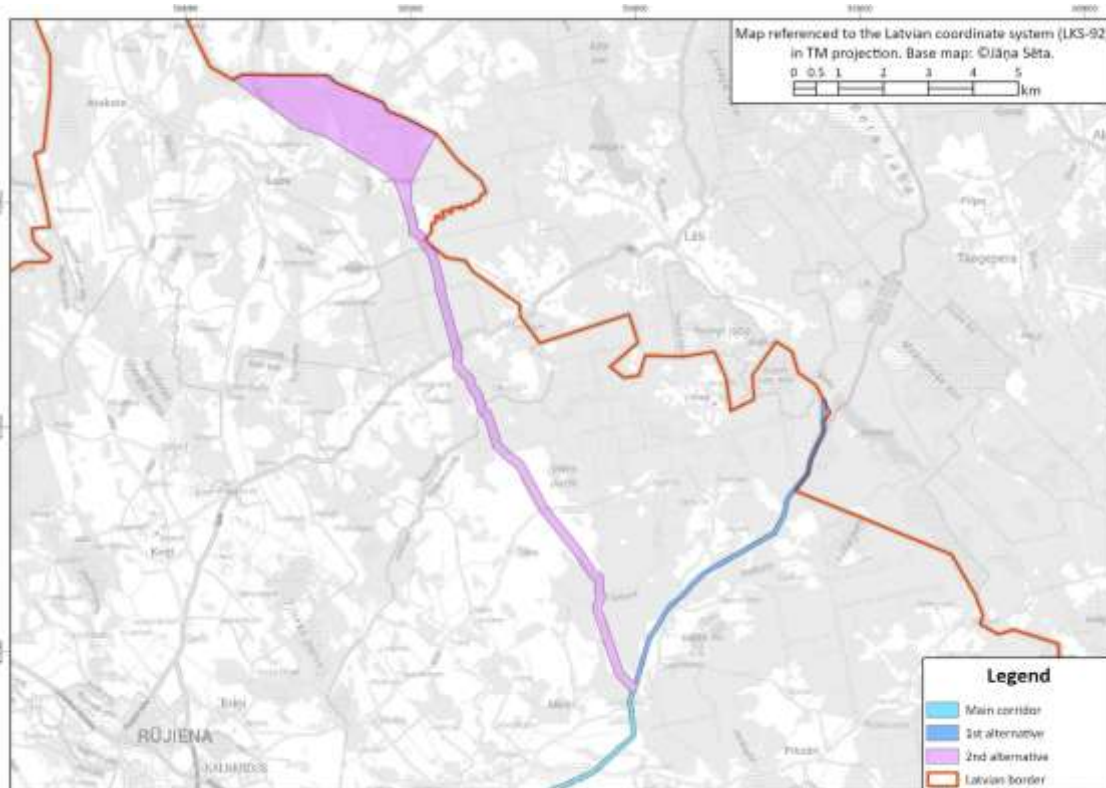


Figure 3. Pipeline alignment alternatives to be assessed in the EIA Report

In order to evaluate the potential environmental impacts of the intended pipeline and its surrounding areas during the EIA process, a study corridor has been defined, within which the pipeline alignment will be determined in the subsequent stages of project development. For the main route and Alternative 1, the study corridor has been defined with as 50 m on each side of the axis of the existing natural gas pipeline. Considering that Alternative 2 envisages the construction of the route within a new corridor, a wider study area has been defined – 200 m in width, as well as an extended area to determine the potential interconnection point with Estonia.

The pipeline alignment within the study corridor will be determined during the EIA process and further refined during the design phase by selecting the alternative that ensures the best balance between environmental protection, public interests and the interests of landowners.

The study area of the intended pipeline (considering both Alternative 1 and Alternative 2) crosses 1,773 land parcels². The list of the affected land parcels is attached as Annex 1 of the Application.

2.2. Description of the physical characteristics of the intended activity

The Project will consist of several key infrastructure elements:

- **Pipeline**
The total length of the pipeline within the territory of Latvia will be approximately 270–300 km, depending on the selected alignment and the interconnection point with Estonia. The nominal diameter of the hydrogen pipeline, based on the study “*Nordic–Baltic Hydrogen Corridor (NBHC) Technical Feasibility Study of the Section in Latvia*” conducted in 2025, will be up to DN1200 (1200 mm);
- **Gas metering station**
A gas metering station will be installed at approximately 5 km from the Latvia–Estonia border to ensure the metering of incoming hydrogen flows and the monitoring of hydrogen quality;
- **Compressor station**
A compressor station is planned to be constructed in Krimulda parish, Sigulda municipality, and its location will depend on the possible connection to the electricity transmission grid. The main function of the compressor station will be to maintain the required pressure and flow rate within the hydrogen pipeline, ensuring stable and efficient hydrogen transmission throughout the system;
- **Pig Trap station**
This facility will ensure system maintenance, cleaning, diagnostics and efficient operation;
- **Valve stations**
Will be installed along the pipeline approximately every 16 km and at major river crossings. Their primary function will be to control and regulate the hydrogen flow within the pipeline.

It should be noted that the gas metering station, pig trap station and valve stations will be located within the operational protection zone of the pipeline, therefore, no additional land parcels will be required for their construction or operation.

The construction of the hydrogen pipeline is predominantly planned, using the open trench method. Construction works will be organised in sequential technological stages:

- Site preparation – initially clearing of excessive vegetation will be performed, if deemed necessary;
- Trenching – removal of topsoil followed by excavation of soil material, which will subsequently be reused for backfilling and land restoration. The planned trench depth is approximately 2 m;
- Pipeline delivery and welding – pipeline sections will be delivered by freight transport and welded directly on-site or in its vicinity;
- Pipeline installation in the trench;
- Backfilling of the trench – after installation, the trench will be backfilled, restoring the original surface relief using excavated materials as much as possible.

The intended hydrogen pipeline will cross both existing roads and railway lines, including the planned *Rail Baltica* railway line, as well as numerous watercourses of various sizes, such as Gauja and Daugava. At such crossings, trenchless construction technologies, such as horizontal directional drilling, will be applied in order to minimise environmental impacts and impacts on existing infrastructure. Locations where such construction methods will be required will be

² The information prepared is based on the State Land Service data on 12 March 2026

determined during the EIA process and the design phase, based on site-specific conditions, engineering geological investigations and crossing characteristics.

In certain sections along the pipeline, formation of temporary construction sites will be required. These sites will provide access for the construction of the pipeline and the associated infrastructure and will serve as storage for the materials necessary for the construction. After the completion of the construction, these sites will be restored and returned to their original condition, thereby ensuring minimal long-term impact on the environment and use of the surrounding land.

Prior to commissioning, the pipeline will be subject to hydrostatic pressure testing using water to verify its integrity and perform internal cleaning. Following testing, the gradual filling of the pipeline with hydrogen will commence under carefully controlled conditions to ensure safe and efficient system operation.

During operation, continuous technical monitoring of the hydrogen pipeline will be ensured, including pressure and flow monitoring. The supervision of the infrastructure will be carried out continuously and will include regular inspections, maintenance, diagnostics and repair works, that will be conducted in accordance with a predefined schedule, for example:

- Physical inspection of valve stations – once per month;
- Maintenance of technological communications – once per year;
- Pipeline diagnostics (using pigging systems) – once every 5 years;
- Inspection of metering stations – once per week, but maintenance thereof – once every 3 months;
- Compressor station inspection during operation – once per hour, maintenance – once per year, but diagnostics – once per month.

If necessary, the pipeline repair works will be carried out in accordance with identified defects, their criticality and practical possibilities for immediate repair.

It should be noted that the currently applicable regulatory framework does not establish the width of protection zones for hydrogen pipelines. In the 2025 study “Nordic–Baltic Hydrogen Corridor (NBHC) Technical Feasibility Study of the Section in Latvia”, it was proposed to establish an operational protection zone extending 15 m from the pipeline axis, as well as a safety protection zone extending up to 189–227 m from the pipeline axis, depending on the selected pipeline diameter. No increase in the extent of the protection zones is currently anticipated; however, a justified reduction thereof may be possible.

3. Information on significant environmental aspects

3.1. Extraction, use and transformation of natural resources, including land areas to be transformed

During the construction and operation of the intended hydrogen pipeline, no extraction or use of natural resources is envisaged. The excavated soil material generated during trenching will be reused for backfilling and site restoration, thereby ensuring efficient and sustainable use of resources during construction.

Following the construction of the pipeline, an operational protection zone will be established for it. Considering that restrictions apply within this protection zone, the area where the hydrogen pipeline will be constructed will not be able to be returned to its previous land use type. These restrictions will be implemented to ensure the safety and integrity of the pipeline, to prevent

activities that could pose risks or disruptions to its operation, and to avoid potential threats to people, their property and the environment.

3.2. Main raw materials and the quantities thereof per year, or planned construction materials and the quantities thereof

The main material for the construction of the hydrogen pipeline will be the pipeline itself and its insulation materials. As stated previously the nominal diameter of the pipeline will be up to 1200 mm. The quantities of materials will be specified during the EIA process and the design phase, taking into account specific construction and technical conditions.

3.3. Products and Their Quantities

The transmission capacity of the planned hydrogen pipeline will be developed in several phases. For each phase, the annual energy flow volume (TWh/year), as well as the corresponding average and maximum (peak) hourly flow rates, will be determined. Detailed information regarding the energy flow volumes for each phase will be specified during the subsequent stages of project development and assessment. Currently, the planned annual energy flow of the Nordic–Baltic Hydrogen Corridor is expected to reach approximately 90 TWh by 2040, while by 2050 it is projected to potentially exceed 120 TWh.

3.4. Water supply solution, water abstraction source and availability of water resources

No water abstraction is planned for the implementation of the intended activity. Portable local solutions will be used to provide construction workers with drinking water and sanitary facilities, including toilets and showers.

3.5. Wastewater quantity and wastewater management solutions

No wastewater generation is anticipated during the implementation of the intended activity. Domestic wastewater generated during construction will be collected and managed in accordance with the applicable regulatory requirements..

3.6. Solution of heat supply

Not applicable to the intended activity.

3.7. Emissions of pollutants to air, water and soil, and odour

Emissions of pollutants to air may occur temporarily during pipeline construction, mainly as a result of earthworks, operation of construction machinery and transportation of materials. The main sources of air pollution during construction will include:

- Dust emissions (including PM10 and PM2.5), generated by earthworks such as removal of topsoil, trench excavation, soil movement, site preparation, etc.;
- Exhaust emissions, generated by construction machinery (excavators, bulldozers, pipeline installation equipment) and the use of transport vehicles, including nitrogen oxides (NOx) and particulate matter emissions resulting from fuel combustion.

In order to minimise impact on air quality, preventive emission reduction measures will be implemented during construction, the scope and specifics of which will be determined during the EIA process.

During the construction of pipeline, negative impact on the quality of water and soil is possible, particularly in connection to trenching activities, storage of construction materials and the

operation of machinery involved in the construction process. To minimise the potential pollution, preventive measures will be implemented during the construction, the scope and specifics of which will be determined during the EIA process.

There are no sources of odour emission identified during the construction or operation of the pipeline.

3.8. Waste from technological processes, by-products and the intended waste management

It is expected that both municipal and construction waste will be generated during pipeline construction. Waste generated during construction will be collected and temporarily stored in waste containers located at designated sites for temporary storage of machinery, equipment and construction materials. Collected waste will be transferred to an operator holding the necessary permits for the transport and management of municipal and construction waste.

4. Physical impact

During pipeline construction, temporary impacts from noise and vibrations may occur, associated with technological construction processes and operation of construction machinery. The impact of noise will be local and temporary as the construction activities will progress gradually along the route instead of being concentrated in one area for an extended period. The intensity will depend on the type of the machinery used, organisation of works and the distance to the nearest residential building.

During the operational phase of the hydrogen pipeline, the compressor station is considered to be a significant source of noise. During the EIA process, noise levels generated by the compressor station will be assessed to ensure that environmental noise limits are not exceeded in nearby residential areas.

Vibrations may occur during the movement of heavy machinery, trench excavation, soil compaction and the application of trenchless technologies. The impact of vibrations will be limited to a relatively short distance from the construction area and will be temporary.

During pipeline operation, vibrations outside technological equipment are not expected, as hydrogen transmission will take place within a closed system without external mechanical processes, at several metres below ground level.

5. Information on location within protected nature area or microreserve, distance to Natura 2000 areas

The planned hydrogen pipeline route may potentially impact on six specially protected nature territories (hereinafter – SPNT), including two Natura 2000 sites (see Figure 4). Table 1 summarises information on the SPNTs that are intersected by the study area of the intended hydrogen pipeline.

The pipeline will also cross certain microreserves or their buffer zones, as well as various EU-protected habitats, including grassland, forest and other habitat types. Potential impacts on protected large trees may also occur.

At the same time, it should be taken into account that the hydrogen pipeline will be located adjacent to the existing natural gas transmission pipeline, which already crosses the above-mentioned protected nature territories.

The pipeline corridor will be assessed by certified nature conservation experts, who will provide recommendations regarding the alignment of the pipeline and propose measures to reduce impacts on natural values. During the EIA process, the potential impact of the intended activity on SPNTs located near the pipeline and their key natural values will be assessed in order to ensure minimal adverse effects on the environment and natural resources.

Table 2. Specially protected nature territories crossed by the intended hydrogen pipeline

Name of the SPNT	Category	Code	Year of establishment	Natura 2000 site
Ziemeļvidzemes biosfēras rezervāts	Biosphere reserve	LV0000100	1997	No
Augsto kalnu meži	Nature reserve	LV0537200	2023	No
Ziemeļgauja	Protected landscape area	LV0600700	2004	Yes (Type C – for the protection of specially protected species and specially protected habitats)
Gaujas Nacionālais parks	National park	LV0200100	1973	Yes (Type C – for the protection of specially protected species and specially protected habitats)
Rāceņmuižas alejas	Protected valley	LV0490550	-	No
Tumšupes meži	Nature reserve	LV0543300	2023	No

distance of approximately 15 metres between pipeline axes, thereby reducing the need for new route corridors and the associated impacts on properties crossed and the environment.

The main environmental impacts are associated with the construction process of the pipeline. During the operational phase, the most significant environmental impact is expected to be noise generated by the operation of the compressor station. In order to reduce potential environmental impacts, proposals for preventive mitigation measures will be developed during the EIA process.

The planned hydrogen pipeline route may potentially affect six SPNTs, microreserves, specially protected habitats, and potentially also protected large trees. The pipeline corridor will be assessed by certified nature conservation experts, who will provide recommendations regarding pipeline alignment and propose measures to reduce impacts on natural values.

The study area of the pipeline also affects the protection zones of several cultural heritage monuments of national significance. During the EIA, restrictions that may influence the pipeline alignment or impose additional constraints or conditions on construction works will be assessed.

The intended hydrogen pipeline will cross existing roads and railway lines, including the planned *Rail Baltica* railway line. In such crossings, construction methods will be selected that least with or affect the operational safety and integrity of the relevant infrastructure.

According to the information available, it is not expected that the hydrogen pipeline will cross the territory of any planned wind farm.

Current regulations do not define protection zone widths for hydrogen pipelines. In the 2025 study “Nordic–Baltic Hydrogen Corridor (NBHC) Technical Feasibility Study of the Section in Latvia”, it was proposed to establish an operational protection zone extending 15 m from the pipeline axis, as well as a safety protection zone extending up to 219 m from the pipeline axis. The establishment of new protection zones may impose restrictions on landowners.

During the preparation of the EIA, in accordance with the EIA programme and sectoral regulatory requirements, expected impacts will be identified and assessed, identifying and planning the most appropriate solutions for impact prevention or mitigation.

As the construction of the hydrogen pipeline corridor is also planned within the territories of Lithuania and Estonia, carrying out the appropriate environmental impact assessment procedures, despite the fact that the intended activity will be implemented near the border and may have potential cross-border impacts, the Initiator considers that a transboundary EIA is not required.

The information provided in this Application is true and complies with the requirements set out in the regulatory acts.

Annex. List of land parcels crossed by the hydrogen pipeline study area; consisting of 40 pages.

Chairman of the board

Uldis Bariss

This document is electronically signed with a secure electronic signature and contains a timestamp

List of land parcels crossed by the hydrogen pipeline study area

Table 1. Land parcels crossed by the hydrogen pipeline study area in Valmiera municipality

Cadastral identifier	Cadastre number	Name of the property
96580040134	96580040134	Ragaiņi
96580040136	96580040136	Priežkalni
96580040001	96580040001	Jaunstirnas
96580060050	96580060050	Bildari
96580060147	96580060173	Meža griezies
96580060107	96580040241	110 kV elektropārvades līnija
96580060097	96580060173	Meža griezies
96580060028	96580060027	Rudzīši
96580060052	96580060050	Bildari
96580060020	96580060018	Zvaigznītes
96580060120	96580060120	Oleru sils
96580060108	96580060108	Maģistrālais gāzes vads
96580060152	96580060152	Ārluikas - Zēdavas
96580060051	96580060050	Bildari
96580060123	96580060123	Meždibeņu mežs
96580060103	96580020088	Autoceļš P17
96620010070	96620010070	Dzelzceļš Rīga-Lugaži 123.km-125.km
96620010036	96620010036	Ķeņģupītes mežs
96620010114	96620010003	Jaunieviņas
96620010108	96620010130	Lauku Kātiņi
96620010069	96620010069	V196
96620010002	96620010002	Lāčkalni
96620010111	96620010003	Jaunieviņas
96620010109	96620010131	Meža Kātiņi
96620010028	96620010124	Baiļukalna mežs
96620010007	96620010074	Gauja
96620010010	96620010010	Lejasbaiļi
96620010001	96620010001	Kalniņi
96620010023	96620010023	Baiļa mežs
96620030018	96620030017	Jaunzemi
96620030207	96620020624	Autoceļš P18
96620030253	96620030265	Mičkēnu Ievas
96620030058	96620030272	Vagulīši
96620030132	96620030132	Bērziņi
96620030162	96620030053	Ozoli
96620030120	96620040029	Līzbetes - Ķigulī
96620030251	96620030263	Mičkēnu Vārpas
96620030029	96620030029	Apsītes
96620030117	96620030051	Upmaļi
96620030268	96620030020	Vaguļi
96620030262	96620030039	Skujāni
96620030119	96620030119	Upmaļi - Sālsmiļi

Application for the intended activity of the construction of the Nordic-Baltic Hydrogen Corridor in the territory of Latvia

Cadastral identifier	Cadastre number	Name of the property
96620030252	96620030264	Mičkēnu Enzelīņi
96620030017	96620030017	Jaunzemi
96620030126	96620030126	Austrumi - Kļavas
96620030216	96620030077	Jaunkrāsnieki
96620030261	96620030269	Mazskujāni
96620030100	96620030100	Vētras
96620030012	96620030051	Upmaļi
96620030053	96620030053	Ozoli
96620040014	96620040014	Jaunskāmas
96620040042	96620040042	Gāzes vads
96620040057	96620040057	Lejasskāmas
96620070130	96620070129	Putniņi
96620070285	96620070285	Ķīguļu ceļš
96620070245	96620070328	Jaunbūtes
96620070314	96620070030	Strautmaļi
96620070072	96620070531	Laukputniņi
96620070296	96620070296	Gāzes vads
96620070002	96620070002	Baloži
96620070547	96620070046	Ķīguļi
96620070523	96620070071	Mazputniņi
96620070131	96620070129	Putniņi
96620070283	96620070283	Mūrmuiža - Purmatuļi
96620070270	96620070270	Jaunlodziņi
96620070239	96620070239	Lodziņi
96620070237	96620070237	Kauliņi
96620070090	96620070090	Vecpurmatuļi
96620070255	96620070254	Būtes mežs
96620070244	96620070244	Sukuri
96620070254	96620070254	Būtes mežs
96620070278	96620070328	Jaunbūtes
96620070273	96620070273	Veclodziņi
96620070049	96620070046	Ķīguļi
96620070142	96620070142	Lielbūtes
96620070288	96620070288	Purmatuļu ceļš - Pavāru ceļš
96620070284	96620080041	Mūrmuiža - Pavāri
96620070279	96620070244	Sukuri
96620070378	96620070244	Sukuri
96620070263	96620070263	Vimbās
96620070129	96620070129	Putniņi
96660020043	96660020043	Lucas
96660020057	96660020057	Valsts robežjoslas zemes
96660020147	96660020147	Jaunstāpeles
96660020052	96660020051	Čiekuri
96660020084	96660020084	Vecinduļi
96660020144	96660010102	Elektrolīnijas
96660020122	96660020012	Robežmala
96660020129	96660050177	Autoceļš P17

Application for the intended activity of the construction of the Nordic-Baltic Hydrogen Corridor in the territory of Latvia

Cadastral identifier	Cadastre number	Name of the property
96660020123	96660020162	Miltiņu mežs
96660020035	96660020035	Jaunindūļi
96680030148	96680030148	Miltiņu mežs
96680030109	96680030108	Vanagi
96680030150	96680030149	Jaundambji
96680030052	96680030161	Silkalni
96680030106	96680030106	Rūjas
96680030110	96680030110	Rauši
96680030058	96680030058	Lejaslamikas
96680030080	96680030077	Dambji
96680030099	96680030037	Kalna Tiskas
96680030060	96680030058	Lejaslamikas
96680030057	96680030053	Rauķupes
96680030031	96680030034	Laņģītes
96680030049	96680030048	Klāviņi 1
96680030033	96680030034	Laņģītes
96680030004	96680030004	Ķellastes
96680030068	96680030068	Vairogi
96680030061	96680030061	Kalnmeļķi
96680030207	96680030047	Ceriņi
96680030056	96680030053	Rauķupes
96680030065	96680030063	Noras
96680030142	96680010095	Valsts robežjoslas zemes
96680030108	96680030108	Vanagi
96680030105	96680030021	Kalnalamikas
96680030039	96680030039	VANADZIŅI
96680030208	96680030215	Ceriņlauks
96680030026	96680030026	Ķerzas
96680030015	96680030014	KOLKAS
96680030020	96680030020	Lamikas
96680030011	96680030010	Krastmaļi
96680030157	96680030157	Ceriņi
96680030037	96680030037	Kalna Tiskas
96680030143	96680030143	Rūjas upe
96680030062	96680030062	Lejas Meļķi
96680030104	96680030104	Miķeļkalni
96680030014	96680030014	KOLKAS
96680030112	96680030112	Ķiezneru mežs
96680030025	96680030025	Jāņkalni
96680030036	96680030036	Lejastiskas
96720010022	96720010022	Kalnķērzēni
96720010023	96720010094	Ķērzēnmežs
96720010038	96720010038	Kalmesteri
96720010028	96720010028	Lejas Ķērzēni
96720010060	96720010060	Oliņas
96720010040	96720010040	Mazmesteri
96720010065	96720010065	Kalnintes

Application for the intended activity of the construction of the Nordic-Baltic Hydrogen Corridor in the territory of Latvia

Cadastral identifier	Cadastre number	Name of the property
96720010004	96720010004	Eglaines
96720010091	96720010001	Jaunķērzēni
96720010042	96720010042	Jaunķegļi
96720010024	96720010093	Ķērzēnlauks
96720010047	96720010028	Lejas Ķērzēni
96720010075	96720010075	Doles - Oliņas
96720010092	96720010093	Ķērzēnlauks
96720020114	96720020111	Maģistrālais gāzes vads
96720020094	96720020154	Ernikas
96720020162	96720020163	Dižkārkli
96720020121	96720040094	Ceļš Ķire - Alēni
96720020076	96720020076	Zeltberi
96720020130	96720020150	Zulšu mežs
96720020039	96720020039	Peitēni
96720020107	96720020107	Ķeizarmeži
96720020001	96720020001	Apsītes
96720020164	96720020166	Kalnveceļu mežs
96720020120	96720020120	Valsts robežjoslas zeme
96720020161	96720020002	Mežaudzes
96720020113	96720020111	Maģistrālais gāzes vads
96720020124	96720020089	Jaunmuslakas
96720020077	96720020027	Lejaszulši
96720020025	96720020025	Jaunpeitēni
96720020003	96720020003	Liepkalni
96720020016	96720020003	Liepkalni
96720020093	96720020093	Dambji
96720020015	96720020002	Mežaudzes
96720020090	96720020089	Jaunmuslakas
96720020101	96720020008	Upeskalni
96720020023	96720060064	Salaiņi
96720020028	96720020028	Lejasudzēni
96720020128	96720020126	Vecezera masīvs
96720020083	96720020082	Līdumnieki
96720020011	96720020148	Selgu mežs
96720020062	96720020062	Lucas
96720020033	96720020032	Mētras
96720020066	96720020066	Vēveri
96720020111	96720020111	Maģistrālais gāzes vads
96720020050	96720020151	Eriķi
96720020082	96720020082	Līdumnieki
96720020131	96720020150	Zulšu mežs
96720020027	96720020027	Lejaszulši
96720020125	96720020089	Jaunmuslakas
96720020091	96720020091	Dambkalni
96720020040	96720020039	Peitēni
96720020115	96720020111	Maģistrālais gāzes vads
96720020129	96720020126	Vecezera masīvs

Application for the intended activity of the construction of the Nordic-Baltic Hydrogen Corridor in the territory of Latvia

Cadastral identifier	Cadastre number	Name of the property
96720020108	96720020108	Meždambji
96720020031	96720020030	Muslakas
96720040041	96720040041	Kalnbolles
96720040100	96720040100	Lukstkalni
96720040092	96720060354	Autoceļš V230
96720040009	96720040008	Jauncelmi
96720040033	96720040033	Vējiņi
96720040060	96720040060	Tēvdēli
96720040027	96720040027	Kalnējēģeri
96720040010	96720020030	Muslakas
96720040084	96720020111	Maģistrālais gāzes vads
96720040083	96720020111	Maģistrālais gāzes vads
96720040059	96720040059	Ratnieki
96720040055	96720040055	Ārņi
96720040081	96720040129	Pļavas
96720040031	96720040029	Lejasbolles
96720040113	96720040113	Mežnoras
96720040082	96720040148	Gulbīši
96720040012	96720040145	Rogas
96720040008	96720040008	Jauncelmi
96720040086	96720060343	
96720040085	96720020111	Maģistrālais gāzes vads
96720040141	96720040007	Lejasbolles ferma
96720040094	96720040094	Ceļš Ķīre - Alēni
96720050143	96720020120	Valsts robežjoslas zeme
96720050148	96720020122	Piksāru masīvs
96720060226	96720060226	Bērzupes
96720060455	96720060094	Kalnējēči
96720060227	96720060226	Bērzupes
96720060490	96720020111	Maģistrālais gāzes vads
96720060454	96720060458	Jēčukalni
96720060346	96720080101	Stirnas purvs
96720060342	96720060340	
96720060410	96720020111	Maģistrālais gāzes vads
96720060244	96720060244	Breidas
96720060489	96720060493	Mežaķepes
96720060432	96720060432	Brantiņi
96720060357	96720060357	V205
96720060248	96720060190	Lejasbrantiņi
96720060339	96720020111	Maģistrālais gāzes vads
96720060209	96720060209	Jungas
96720060491	96720020111	Maģistrālais gāzes vads
96720060373	96720060373	Ceļš Breidas - Zemgaļi
96720060139	96720060136	Sūnas
96720060208	96720060007	Jungas
96720060198	96720060198	Ūgas
96720060348	96720060348	Brantiņšils

Application for the intended activity of the construction of the Nordic-Baltic Hydrogen Corridor in the territory of Latvia

Cadastral identifier	Cadastre number	Name of the property
96720060205	96720060204	Veckaukas
96720060452	96720060456	Lejasjēči
96720060167	96720060167	Jaunkaukas
96720060246	96720060246	Ķezberkalni
96720060207	96720060206	Cimdiņi
96720060021	96720060021	Kalnbrantiņi
96720060175	96720060174	Ķirmeži
96720060241	96720060198	Ūgas
96720060337	96720020111	Maģistrālais gāzes vads
96720060141	96720060141	Vecozoli
96720060204	96720060204	Veckaukas
96720060183	96720060183	Mežmājas
96720060245	96720060244	Breidas
96720060036	96720060035	Purapuķes
96720060176	96720060176	Mežiņi
96720060355	96720030063	Autoceļš P22
96720060229	96720060229	Skujas
96720060190	96720060190	Lejasbrantiņi
96720060206	96720060206	Cimdiņi
96720060435	96720060434	Ķires upe
96720070003	96720070031	Vecdravnieki
96720070023	96720020111	Maģistrālais gāzes vads
96720080102	96720080109	Stirnas mežs
96780010130	96780010097	Smuikas
96780010128	96780010128	Bajāri - gāzes vads
96780010032	96780010032	Pīleņģīši
96780010107	96780039239	Vizmas
96780010028	96780010023	Mašas
96780010127	96780010127	Sīliši - gāzes vads
96780010043	96780010043	Mazseskupi
96780010048	96780010048	Vecbajāri
96780010132	96780010132	Vētraskalni
96780010210	96780030394	Bērzpļavas
96780010118	96780010118	Rinmaņi
96780010236	96780010241	Jaunsīļi
96780010076	96780010219	Kailais sils
96780010093	96780010093	Gāzes vads
96780010126	96780010126	Vizmas - gāzes vads
96780010077	96780010228	Stārastanči 2
96780010085	96780010135	Jaunspēļģi
96780010061	96780010252	Sīļlejas
96780010125	96780010125	Liepiņas 2
96780010235	96780010066	Sīliši
96780010152	96780010152	Lāčkalni
96780010062	96780010063	Kurzemnieki
96780010153	96780010153	Kalnāres
96780010053	96780010229	Ozolnieki

Application for the intended activity of the construction of the Nordic-Baltic Hydrogen Corridor in the territory of Latvia

Cadastral identifier	Cadastre number	Name of the property
96780010250	96780010190	Seda
96780010106	96780010106	Bullupe - Kēles
96780030126	96780010094	Autoceļš P17
96780030019	96780030014	Lukstiņi
96780030060	96780030008	Smilškalni
96780030149	96780030361	Jaunbalceri
96780030018	96780050139	Gāzes vads
96780030150	96780070108	Jaundimanti
96780030316	96780030316	Rasmas
96780030175	96780030025	Klupi
96780030091	96780030091	Mežakošķeles
96780030362	96780030361	Jaunbalceri
96780030029	96780030027	Jaunklupi
96780030003	96780030003	Cīruļi
96780030008	96780030008	Smilškalni
96780030089	96780030089	Upītes
96780030176	96780030196	Mežlejas
96780030315	96780030202	Trēši
96780030361	96780030361	Jaunbalceri
96780030318	96780030318	Augstsprieguma tīkli 110 kV EPL \ 26m
96780030127	96780030127	V231
96780030026	96780030196	Mežlejas
96780030093	96780030093	Aņģīši
96780030130	96780030170	Jaunstūrīši
96780030001	96780030001	Kaķīši
96780030165	96780030094	Stārastanči
96780030027	96780030027	Jaunklupi
96780030406	96780030094	Stārastanči
96780030162	96780030162	Sivēnaste
96780030095	96780030095	Vecstārastanči
96780030015	96780030015	Jaunaičas
96780030155	96780030155	V112
96780030317	96780030128	Rencēni - Lizdēni
96780030181	96780030188	Zemes Vienvīri
96780030078	96780030078	Blīzmas
96780030319	96780030319	Cīruļi - gāzes vads
96780030123	96780050139	Gāzes vads
96780030394	96780030394	Bērzplavas
96780030124	96780030124	Smuikas - Kaķīši
96780030172	96780030030	Sidrabi
96780030031	96780030030	Sidrabi
96780030122	96780030122	Lāčkalni - gāzes vads
96780030238	96780030004	Minči
96780050017	96780050430	Meža Vienvīri
96780050141	96780050444	Amerikas mežs
96780050389	96780050015	Dzelzītes
96780050197	96780050197	Dzelzītes - gāzes vads

Application for the intended activity of the construction of the Nordic-Baltic Hydrogen Corridor in the territory of Latvia

Cadastral identifier	Cadastre number	Name of the property
96780050058	96780050057	Vecšķērsti
96780050194	96780050516	Viesturu mežs
96780050347	96780050347	Lizdēni 26
96780050334	96780050334	Lizdēni 13
96780050388	96780050015	Dzelzītes
96780050390	96780050015	Dzelzītes
96780050144	96780060187	Priedkalnītes
96780050344	96780050511	Lizdēni 23
96780050089	96780050089	Čukuri
96780050346	96780050346	Lizdēni 25
96780050199	96780010162	Elektrolīnija 20 kV 13m
96780050203	96780050203	Jaungriķi
96780050143	96780050143	Lapiņas
96780050139	96780050139	Gāzes vads
96780050193	96780050149	Zenzari
96780050090	96780050007	Kokaiņi
96780050401	96780050401	Meža Jēkuļi
96780050342	96780050342	Lizdēni 17
96780050345	96780050345	Lizdēni 24
96780050091	96780050007	Kokaiņi
96780050431	96780050433	Vīri
96780050464	96780010162	Elektrolīnija 20 kV 13m
96780050076	96780030127	V231
96780050453	96780050457	Zemesvīri
96780050015	96780050015	Dzelzītes
96780070069	96780070069	Druvmaļi
96780070053	96780070051	Melluplūķi
96780070086	96780080130	Zilgmes
96780070002	96780070002	Ķeiži
96780070080	96780070080	Straumēni
96780070082	96780070082	Jaunkārkli - gāzes vads
96780070193	96780070192	Gāzes vads
96780070192	96780070192	Gāzes vads
96780070036	96780070036	Auziņas
96780070074	96780070179	Sēpuru mežs
96780070120	96780070110	Žuburi
96780070085	96780070155	Meža Neibādes
96780070067	96780070067	Zeltkalni
96780070118	96780070118	Tūteļi - gāzes vads
96780070038	96780030226	Jaunstrēlnieki
96780070124	96780070124	Melluplūķi - Ārņi
96780070054	96780070054	Jaunkārkli
96780070083	96780070083	Ķeiži - gāzes vads
96780070119	96780070095	Augsāri
96780070001	96780070001	Eži
96780070030	96780070030	Druvmalas
96780070094	96780070092	Lūķīši

Application for the intended activity of the construction of the Nordic-Baltic Hydrogen Corridor in the territory of Latvia

Cadastral identifier	Cadastre number	Name of the property
96780070003	96780070003	Skābumi
96780070052	96780070051	Melluplūķi
96780070110	96780070110	Žuburi
96780070084	96780070084	Skābumi - gāzes vads
96780070176	96780070179	Sēpuru mežs
96780070039	96780070039	Rīti
96780080144	96780080144	Stiprie
96780080145	96780080145	Saulgoži
96780080141	96780080141	Upmaļi 1
96780080147	96780080147	Dūkas - gāzes vads
96780080131	96780080088	Smedēni un Vecie Ģinduļi
96780080044	96780080042	Meža lūķi
96780080043	96780080042	Meža lūķi
96780080219	96780080226	Egles
96780080220	96780080225	Saknītes
96780080221	96780080129	Skujas - gāzes vads
96900020041	96900020040	Gerdēnu līkums
96900020066	96900050071	
96900020069	96900080225	Oši
96900020028	96900020028	Vagaļu mežs
96900020040	96900020040	Gerdēnu līkums
96900020047	96900020047	Bērzkalni
96900020029	96900020029	Vecbebru mežs
96900020063	96900040088	V232
96900040076	96900040076	Sīmanēni 5
96900040004	96900040004	Vecbebri
96900040095	96900040095	Rāmnieki
96900040078	96900040118	Fazāni
96900040102	96900100011	Lielruģēni
96900040088	96900040088	V232
96900040077	96900040077	Klāvi
96900050053	96900050121	Meža Pumpuriņi
96900050080	96900050080	
96900050032	96900050128	Birznieki
96900050071	96900050071	
96900050073	96900050073	
96900050021	96900050021	Pārupes
96900050111	96900050121	Meža Pumpuriņi
96900100153	96900100153	Ievlejas
96900100060	96900100060	Mežmalas
96900100114	96900100114	Zābaki
96900100120	96900100117	Rūpnieku mežs
96900100101	96900100101	Slaupi
96900100108	96900100262	Mežaķīši
96900100117	96900100117	Rūpnieku mežs
96900100170	96900100117	Rūpnieku mežs
96900100059	96900040022	Vecbenči

Application for the intended activity of the construction of the Nordic-Baltic Hydrogen Corridor in the territory of Latvia

Cadastral identifier	Cadastre number	Name of the property
96900100268	96900100158	Pastalas
96900100138	96900080217	Autoceļš A3
96900100288	96900100274	Ozolķīši
96900100113	96900100113	Liellīkumi
96900100171	96900100117	Rūpnieku mežs
96900100150	96900040097	Rūjienas šoseja - Slaunes -Valkas šoseja
96900100105	96900040077	Klāvi
96900110037	96900050061	Ķelderlejas mežs
96900110010	96900110009	Brīvieši
96900110072	96900080184	Ķiršukalni
96900110050	96900110050	Rieksti
96900110001	96900110001	Lielģibži
96900110063	96900120009	Valmiera - Ģibži
96900110004	96900110004	GRS Valmiera 2
96900110183	96900110008	Lejas Ķelderi
96900110184	96900110012	Vecķelderi
96900110055	96900110055	Garausi
96900110017	96900110017	Kalnaģibži
96900120009	96900120009	Valmiera - Ģibži
96900120006	96900030061	Gauja
96900120001	96900120001	Gaujmalieši
96900120037	96900120004	Daliņi

Table 2. Land parcels crossed by the hydrogen pipeline study area in Valka municipality

Cadastral identifier	Cadastre number	Name of the property
94660020074	94660050253	Pabērži
94660020043	94660020005	Jaunjandavas 2

Table 3. Land parcels crossed by the hydrogen pipeline study area in Smiltene municipality

Cadastral identifier	Cadastre number	Name of the property
42760030019	42760030152	Meža Stukī
42760030002	42760030002	Grāveļi
42760030281	42760030226	Reinas
42760030156	42760030156	Mazstrīķeļi
42760030066	42760030162	Vidus Ģipšļi
42760030166	42760030166	Veckarēļi
42760030017	42760030169	Stukū Pļavas
42760030133	42760030133	Vecpāvuli
42760030289	42760030070	Upes Paurnieši
42760030013	42760030013	Siliņi
42760030203	42760030237	Meža Paurnieši
42760030064	42760030064	Jaunrauskas
42760030132	42760030132	Papīrfabrika
42760030011	42760030011	Vecrauskas
42760030069	42760030069	Lejas Paurnieši

Application for the intended activity of the construction of the Nordic-Baltic Hydrogen Corridor in the territory of Latvia

Cadastral identifier	Cadastre number	Name of the property
42760030106	42760030152	Meža Stūķi
42760030285	42760030083	Mežvidi
42760030194	42760030194	Uz Stūķiem
42760030028	42760030028	Rēķi
42760030008	42760030008	Pāvulkalni
42760030189	42760060494	Mucenieki -Zvirgzdiņi - Irbītes
42760030209	42760030209	V187
42760030284	42760030089	Paurnieši
42760030233	42760030245	Jaunkurmi
42760030234	42760030246	Meža Kurmi
42760060759	42760060553	Autoceļš P28
42760060405	42760060670	Apsītes
42760060398	42760060398	Strīķeļi
42760060467	42760060467	Meža Lodes
42760060666	42760060666	Jaunlodes
42760060493	42760060493	Veclodes
42760060401	42760060401	Sauleskalni
42760080110	42760080025	Jaunklinči

Table 4. Land parcels crossed by the hydrogen pipeline study area in Cēsis municipality

Cadastral identifier	Cadastre number	Name of the property
42460020397	42460020397	Uplanti
42460020410	42460020410	Lejas Astītes
42460020423	42460020423	Kalna Liepkalni
42460020213	42460020213	Druvas
42460020570	42460020570	Uplandi
42460020723	42460020582	Kalna Saulītes
42460020511	42460020511	Māliņi
42460020124	42460020124	Pūcītes
42460020396	42460020685	Pērkoni
42460020559	42460020559	Puškina krustojums-Celmiņi
42460020077	42460020077	Lejas Ģevēkas
42460020409	42460020409	Vinteri
42460020722	42460020725	Saules Pļavas
42460020013	42460020012	Puškini
42460020479	42460020479	Zvaigznes
42460020754	42460020392	Zīpari
42460020755	42460020806	Zīparmežs
42460020474	42460040071	Lejas Priedes
42460020221	42460050146	Bramaņi
42460020076	42460020076	Rūķi
42460020118	42460020118	Pērles
42460020442	42460020816	Skudrinieki
42460020462	42460050201	Autoceļš P20
42460020395	42460020805	Zīparkalns
42460020292	42460020292	BMX trase

Application for the intended activity of the construction of the Nordic-Baltic Hydrogen Corridor in the territory of Latvia

Cadastral identifier	Cadastre number	Name of the property
42460020753	42460020813	Astes
42460020757	42460020810	Meža namiņš
42460020758	42460020815	Zemturi
42460020566	42460020566	Vecais ceļš gar Zīpariem
42460030027	42460030027	GNP virsmežniecība, Amatas mežniecība
42460030082	42460030082	Amatas upe
42460030005	42460030005	Vieļas
42460030100	42460010046	Gaujas NP Drabeši
42460040166	42460040095	Kopas
42460040162	42460060038	Macīši
42460040152	42460040152	Āraiši
42460040102	42460040102	Celminieki
42460040027	42460040027	Rijnieki 3
42460040055	42460040153	Jaunmājas
42460040167	42460040104	Kalna Vītagas
42460040123	42460040123	Āraiši 8
42460040231	42460040023	Kalna Vārnas 1
42460040203	42460040125	Rozas
42460040003	42460040003	Kalna Rāceņi
42460040036	42460040036	Strautiņi
42460040129	42460040077	Viļņi
42460040105	42460040105	Vārnas 1
42460040104	42460040104	Kalna Vītagas
42460040029	42460040029	Gobiņas
42460040095	42460040095	Kopas
42460040077	42460040077	Viļņi
42460040156	42460010096	V291
42460040190	42460040190	Birzītes-Taipas
42460040062	42460020582	Kalna Saulītes
42460040080	42460010084	Jasmīnas
42460040155	42460050204	V283
42460040163	42460060038	Macīši
42460040153	42460040153	Jaunmājas
42460040005	42460040003	Kalna Rāceņi
42460040056	42460040153	Jaunmājas
42460050177	42460050109	Ņami 2
42460050281	42460050281	Grantskalni
42460050149	42460050235	Meža Cīruļi
42460050206	42460050347	Teķi
42460050178	42460050109	Ņami 2
42460050024	42460050024	Vidusnami
42460050079	42460050329	Grantslejas
42460050179	42460050293	Dubulti
42460050209	42460040071	Lejas Priedes
42460050016	42460050015	Skudras
42460050015	42460050015	Skudras

Application for the intended activity of the construction of the Nordic-Baltic Hydrogen Corridor in the territory of Latvia

Cadastral identifier	Cadastre number	Name of the property
42460050023	42460050024	Vidusnami
42460050014	42460050014	Vanagi
42620030020	42620030020	Kronīši
42620030100	42620030100	Pagasta mežs-5
42620030036	42620030036	Lūsari 6
42620030067	42620030067	Ceļmalas
42620030013	42620040051	Upenes
42620030053	42620030054	Jaunkalēji
42620030027	42620030027	Liellūsari
42620030096	42620030096	Pagasta mežs 6
42620030167	42620030069	Liellūsari 2
42620030004	42620030003	Žakari
42620030177	42620030051	Leijas
42620030168	42620030172	Lūsari
42620030103	42620040051	Upenes
42620030108	42620030108	V282
42620040024	42620040023	Vāvuļas
42620040261	42620040261	Lejas Skapari
42620040552	42620040552	Vecdreļi
42620040214	42620040214	Zīles
42620040751	42620040760	Pauniņi
42620040219	42620040218	Zīladzi
42620040023	42620040023	Vāvuļas
42620040750	42620040040	Bitenieki
42620040435	42620040435	"Lielzanderu dārzi"
42620040831	42620040221	Ramas
42620040832	42620040861	Ramu ezeri
42620040838	42620040860	Jaunramas
42620040645	42620040645	Vildogas iela-Ramas-Pakalnes
42620040527	42620020029	V283
42620040839	42620040859	Ramu noliktavas
42620040837	42620040861	Ramu ezeri
42620050192	42620010183	
42620050080	42620050080	Vecruki 1
42620050123	42620050122	Jaunkalnēni
42620050131	42620050131	Vankas
42620050166	42620050166	Blodziņi-Jaunkārbes
42620050191	42620050191	Dravnieki-Jaunennes
42620050172	42620050004	Dālija
42620050148	42620050148	Līči
42620050220	42620050127	Slavēļi
42620050221	42620050226	Slavēļu lauks
42620050181	42620050181	Lakstīgalas
42620050041	42620050041	Kalnavoti
42620050098	42620050098	Veckārbes
42620050073	42620050073	Kalnzemnieki
42620050159	42620050097	Ikneši

Application for the intended activity of the construction of the Nordic-Baltic Hydrogen Corridor in the territory of Latvia

Cadastral identifier	Cadastre number	Name of the property
42620050126	42620050126	Šēnhauzena
42620050097	42620050097	Ikneši
42620050179	42620050023	Kalna-Slavēkas
42620050019	42620050016	Vālodzes
42620050015	42620050014	Lakstīgalas
42620050038	42620050038	Ūdensstrazdi
42620050124	42620050258	Madariņas
42620050036	42620050036	Augšlīgatne
42620050164	42620050164	Ķempji-Sauleskalns
42620050160	42620050160	V284
42620050037	42620050036	Augšlīgatne
42620050075	42620050075	Apsītes
42620050139	42620050075	Apsītes
42620050042	42620050042	Kalna Kārbes
42620050245	42620050256	Jaunslavēkas
42620050246	42620050257	Lejas Slavēkas
42620060042	42620050098	Veckārbes
42620060040	42620060040	Rožkalni
42640020112	42640020112	Gāzes vads
42640020059	42640020059	Pura Trokšņi
42640020046	42640020040	Jaunieviņas
42640020105	42640020105	Stirnas
42640020016	42640020016	Meža Baloži
42640020024	42640030047	Klētņieki
42640020113	42640020112	Gāzes vads
42640020106	42640020105	Stirnas
42640020120	42640020119	Lauka Baloži
42640020043	42640020040	Jaunieviņas
42640020007	42640020006	Viesturi
42640020031	42640020031	Lienes
42640020103	42640030297	Mārsnēni-Pintuļi
42640020096	42640030278	Kalnupes
42640020060	42640020060	Vecennēni
42640020058	42640020058	Roņi
42640040083	42640040081	Bites
42640040150	42640020112	Gāzes vads
42640040075	42640040075	Bērzlejas
42640040121	42640040017	Āres
42640040068	42640040068	Vecauniņi
42640040029	42640040002	Ābeles
42640040069	42640040022	Dukas
42640040027	42640040140	Lembi
42640040137	42640040017	Āres
42640040280	42640030266	Jānis
42640040140	42640040140	Lembi
42640040114	42640040151	Leišmaņi
42640040040	42640040040	Krasta Sīmaņi

Application for the intended activity of the construction of the Nordic-Baltic Hydrogen Corridor in the territory of Latvia

Cadastral identifier	Cadastre number	Name of the property
42640040080	42640040078	Zaķi
42640040039	42640040036	Kalna Sīmaņi
42640040110	42640040110	Kreitāls
42640040119	42640030286	Mazlembi
42640040042	42640030089	Vecklabi
42640040132	42640010104	V323
42640050124	42640020112	Gāzes vads
42640050025	42640050022	Bajāri
42640050113	42640020105	Stirnas
42640050069	42640030272	Bāleliņi
42640050053	42640050052	Vecbajāri
42640050066	42640050065	Salukalni
42640050033	42640050033	Meža Masuļi
42640050055	42640040047	Leiši
42640050119	42640040009	Ķikuti
42640050102	42640040022	Dukas
42640050130	42640050131	Startu Lāči
42640050034	42640050033	Meža Masuļi
42640050120	42640020112	Gāzes vads
42640050118	42640020105	Stirnas
42640050129	42640050128	Lāčīši
42720040170	42720040277	Meža Ilzītes
42720040077	42720040076	Vecrubeņi
42720050169	42720050169	Osīši
42720050078	42720050214	Jaunviļņi
42720050021	42720050021	Lielstrīķeļi
42720050139	42720070419	Autoceļš P28
42720050117	42720050117;42729000027;42729000028;42729000029;42729001043	Ķirši
42720090012	42720090012	Pļavnieki
42720090003	42720090003	Vairogi
42720090013	42720090013	Rāceņi
42720090046	42720090046	Sili
42720090044	42720070418	Autoceļš P30
42720090014	42720090014	Birzgaļi
42720090024	42720090058	Jaunkārkliņi
42720090017	42720090017	Lejas Puņģi
42720090004	42720090047	Pīlādžiši
42720090038	42720090038	Kristīnes
42720090019	42720090069	Meža Grauzas
42900020008	42900020008	Mazeicēni
42900020166	42900020175	Lieleicēni Viduskampas
42900020260	42900020269	Meža Eicēni
42900020089	42900020089	Gala Sūrītes
42900020164	42900020175	Lieleicēni Viduskampas
42900020162	42900020162	Doņi
42900020084	42900020083	Vidus Sūrītes

Application for the intended activity of the construction of the Nordic-Baltic Hydrogen Corridor in the territory of Latvia

Cadastral identifier	Cadastre number	Name of the property
42900020095	42900020005	Silenieki
42900020167	42900020167	Lielsūrītes
42900020011	42900020011	Lejas Popi
42900020115	42900020116	Plūči
42900020054	42900020054	Kalna Nauri
42900020219	42900020219	Pašvaldības autoceļš B6
42900020116	42900020116	Plūči
42900020045	42900020045	Lejas Nauri
42900020047	42900020047	Lieleicēni
42900020022	42900020022	Dārza Popi
42900020181	42900020181	Eicēni
42900020053	42900020053	Vecnauri
42900020087	42900020087	Kaijas
42900020175	42900020175	Lieleicēni Viduskampas
42900020226	42900020226	V295
42900020165	42900020165	Lielsūrītes
42900020083	42900020083	Vīdus Sūrītes
42900020253	42900020253	Gāzes trase
42900020076	42900020075	Lejas Indriņi 1
42900020038	42900020038	Lejas Indriņi
42900020035	42900050014	Veclejas Pauči
42900020215	42900020215	Ceļa krustojums pie Sūrītēmpag. robeža
42900030255	42900030265	Trase
42900030225	42900030231	Krīvu kalns
42900030040	42900030040	Kalvīškalns
42900030240	42900030244	Upšuki
42900030254	42900030232	Krīvu pļava
42900030241	42900030245	Deičmaņi
42900030111	42900030111	Krīvi-Alejas-Ģevēkas
42900030056	42900030056	Upītes
42900030085	42900030085	Jaungavēni
42900030067	42900030067	Lejas Dzirnava
42900030026	42900030026	Atpūtas
42900030059	42900030058	Krīvu meži
42900030032	42900030032	Zariņi
42900030239	42900030020	Alejas
42900030144	42900030039	Dzelzceļa Rīga - Lugaži 86.km-91.km
42900030159	42900030040	Kalvīškalns
42900030018	42900030018	Saulstari
42900030055	42900030055	Upītes 2
42900030117	42900030117	V294
42900030029	42900030029	Veckalvīši
42900040077	42900040077	Jaunkalvīši
42940010223	42940010223	Vizbuļi
42940010277	42940010277	Nornieki

Application for the intended activity of the construction of the Nordic-Baltic Hydrogen Corridor in the territory of Latvia

Cadastral identifier	Cadastrre number	Name of the property
42940010261	42940010261	V296
42940010270	42940010270	Pļavnieki-Silabuli
42940010215	42940010214	Jaunsilenieki
42940010273	42940010273	Kapi-Veģeri-Vidzemes šoseja
42940010209	42940020069	Veselavas pagasta padomes zeme
42940010036	42940010035	Lipiņi
42940010048	42940010048	Bēberi
42940010380	42940010384	Jaunbuli
42940010035	42940010035	Lipiņi
42940010037	42940010035	Lipiņi
42940010434	42940010438	Rubeņmeži
42940010026	42940010025	Brīvnieki
42940010004	42940010004	Bauskas
42940010208	42940020069	Veselavas pagasta padomes zeme
42940010090	42940040090	Jaunstirnas
42940010214	42940010214	Jaunsilenieki
42940010158	42940010157	Gruzdēs
42940020048	42940020051	Mazpintuļi
42940020073	42940020112	Gravas
42940020055	42940020061	Pupas
42940020058	42940020060	Lazdaines
42940020002	42940020002	Jaunpakodes
42940020011	42940020011	Kalna Ķemēlas
42940020040	42940020040	Mārītes
42940020018	42940020018	Priežkalni
42940020031	42940020001	Namēļi
42940020006	42940020006	Lejas Pintuļi
42940020007	42940020006	Lejas Pintuļi
42940020029	42940020029	Lielkājas
42940020057	42940020008	Straumēni
42940020072	42940020003	Kāres
42940020010	42940020010	Lejas-Lielkājas
42940020096	42940020096	Lejas Pintuļi-Raunas pagasts
42940020094	42940010273	Kapi-Veģeri-Vidzemes šoseja

Table 5. Land parcels crossed by the hydrogen pipeline study area in Sigulda municipality

Cadastral identifier	Cadastrre number	Name of the property
80640010225	80640010226	Meža Gavari
80640010001	80640010001	Lejasābranti
80640010015	80640010015	Adumi
80640010139	80640010116	Katrīnas mežs
80640010230	80640010231	
80640010166	80640010166	
80640010058	80640010001	Lejasābranti

Application for the intended activity of the construction of the Nordic-Baltic Hydrogen Corridor in the territory of Latvia

Cadastral identifier	Cadastre number	Name of the property
80640010089	80640010089	
80640010167	80640010167	Gāzes vads
80640010168	80640010167	Gāzes vads
80640010040	80640010040	Dzelmes
80640010012	80640010012	Bērzkalni
80640010122	80640010122	Mētras 1
80640010135	80640010135	Baznīca - Katrīnas ceļš
80640010088	80640010018	Bērzkalni 1
80640010187	80640010187	Tīraines
80640010101	80640010101	Vangažu evaņģeliski luteriskā draudze
80640010113	80640010001	Lejasābranti
80640010184	80640010184	Virzuļi
80640010031	80640010031	Līgotnes
80640010075	80640060450	Rugāji
80640010132	80640010132	Kuplejas
80640010208	80640010191	Vangažu baznīca-Kārļzemnieki
80640010042	80640010001	Lejasābranti
80640010120	80640010116	Katrīnas mežs
80640010038	80640010038	Māliņi
80640010041	80640010041	Jāņkalni
80640010099	80640010099	Vangažu baznīcas zeme
80640010112	80640010001	Lejasābranti
80640010274	80640010277	Graudzālītes
80640010109	80640010011	Gauja
80640010225	80640010226	Meža Gavari
80640010001	80640010001	Lejasābranti
80640010015	80640010015	Adumi
80640010139	80640010116	Katrīnas mežs
80640010230	80640010231	
80640010166	80640010166	
80640010058	80640010001	Lejasābranti
80640010089	80640010089	
80640010167	80640010167	Gāzes vads
80640010168	80640010167	Gāzes vads
80640010040	80640010040	Dzelmes
80640010012	80640010012	Bērzkalni
80640010122	80640010122	Mētras 1
80640010135	80640010135	Baznīca - Katrīnas ceļš
80640010088	80640010018	Bērzkalni 1
80640010187	80640010187	Tīraines
80640010101	80640010101	Vangažu evaņģeliski luteriskā draudze
80640010113	80640010001	Lejasābranti
80640010184	80640010184	Virzuļi
80640010031	80640010031	Līgotnes
80640010075	80640060450	Rugāji

Application for the intended activity of the construction of the Nordic-Baltic Hydrogen Corridor in the territory of Latvia

Cadastral identifier	Cadastre number	Name of the property
80640010132	80640010132	Kuplejas
80640010208	80640010191	Vangažu baznīca-Kārļzemnieki
80640010042	80640010001	Lejasābranti
80640010120	80640010116	Katrīnas mežs
80640010038	80640010038	Māliņi
80640010041	80640010041	Jāņkalni
80640010099	80640010099	Vangažu baznīcas zeme
80640010112	80640010001	Lejasābranti
80640010274	80640010277	Graudzālītes
80640010109	80640010011	Gauja
80640050124	80640020727	Krustkalnu meža masīvs
80640050135	80640020584	Autoceļš A2
80640050136	80640050136	Autoceļš V75
80640050047	80640050047	Liepiņi
80640050092	80640050088	Ainavas
80640050106	80640050107	Straujupes-1
80640050022	80640050022	Putni
80640050160	80640050160	Jaunbajāri
80640050083	80640050083	Draudavas
80640050057	80640050057	Ceļmalas
80640050089	80640050088	Ainavas
80640050023	80640050023	Dižbajāri
80640050071	80640050071	Kārklēni
80640050016	80640050220	
80640050158	80640050158	Jaunlaubes
80640050097	80640050095	Straujupes-3
80640050052	80640050216	Mežcīruļi
80640050159	80640050046	Laubes
80640050168	80640050063	Katrīnas
80640050051	80640050214	Aļņi
80640050140	80640080201	Griķi - Puriņi
80640080235	80640080121	Zemgaļi
80640080214	80640080220	Rīga-Valka 32.km
80640080208	80640050022	Putni
80640080045	80640080045	Jaunlapkalni
80640080081	80640080081	Šķilbēni
80640080034	80640080034	Stoķi
80640080062	80640080062	Felicitas
80640080221	80640080222	
80680020005	80680020004	Rebi - 1
80680020378	80680020425	Meža Jaunkdrīcas
80680020255	80680020255	Sedelnieki-Graši
80680020122	80680020122	Vecbisenieki
80680020017	80680020016	Rebi - 2
80680020237	80680090053	Melderi
80680020423	80680020439	Rebu lauki
80680020234	80680020234	V90

Application for the intended activity of the construction of the Nordic-Baltic Hydrogen Corridor in the territory of Latvia

Cadastral identifier	Cadastre number	Name of the property
80680060023	80680060023	Lejas Igauni
80680060006	80680060006	Lejasmelderi
80680060022	80680060070	Jaundreimani
80680060052	80680060052	Gauja
80680070370	80680020057	Dzērves
80680070411	80680070229	Smilgas
80680070443	80680070443	Zeme pie Dzērvēm
80680070190	80680070190	Pauskas
80680070487	80680070487	Ricas
80680070522	80680070522	Autoceļš P6
80680070488	80680080214	
80680070213	80680100006	Jāņkalni
80680070279	80680070279	Zemgalīši
80680070442	80680070442	Mežs pie Mudurgām
80680070195	80680020095	Apsītes
80680070922	80680070959	
80680070030	80680070030	Silajāni
80680070611	80680070611	Mežmangaļi
80680070923	80680070193	Kaktiņi
80680070444	80680020218	Senči
80680070456	80680070456	Mežs pie Imantām
80680070565	80680070565	Mauriņi
80680070294	80680070294	Ložas
80680070295	80680070051	Zeme pie Ložas
80680070246	80680070244	Jaunzilkalni
80680070048	80680070048	Vecmangaļi
80680070208	80680070208	Upeslīči
80680070610	80680070610	Kalnangaļi
80680070149	80680070148	Ziemcieši - 1
80680070320	80680070320	Jaunložas
80680070378	80680070378	Draviņas
80680070072	80680070056	Lauka Maldupes
80680070150	80680070150	Mudurgas
80680070061	80680070059	Āres
80680070718	80680070722	Eglieni
80680070243	80680070241	Oškalni
80680070173	80680070173	Meža Brīduļi
80680070199	80680070795	Dižlīves
80680070028	80680070028	Saulītes
80680070276	80680070276	Dravnieki
80680070049	80680070049	Jaunmangaļi
80680070003	80680070003	Kalndunduri
80680070960	80680070327	Kalnložas
80680070178	80680070178	Spāres
80680070524	80680070524	Autoceļš P9
80680070218	80680070218	Kalnīves
80680070045	80680070045	Paimi

Application for the intended activity of the construction of the Nordic-Baltic Hydrogen Corridor in the territory of Latvia

Cadastral identifier	Cadastre number	Name of the property
80680070296	80680070296	Jaunkovalti
80680070074	80680070714	Vecmangulī
80680070365	80680070365	Tāles
80680070366	80680080145	Vidzemes Putniņi
80680070499	80680070499	Dzirnavas-Pausku šķūnis
80680070523	80680050292	Autoceļš A3
80680080005	80680080005	Krieviņi-2
80680080259	80680080259	
80680080056	80680080056	Jaunātes-1
80680080004	80680080004	Krieviņi - 3
80680080192	80680080192	Mežs pie Jaunātēm
80680080065	80680080064	Bružas
80680080214	80680080214	
80680080215	80680070539	Kalnīves-Bušelis
80680080202	80680080202	Rožmaņi
80680080064	80680080064	Bružas
80680080152	80680080152	Krimuldas Līgotāji
80680080222	80680080222	Jauntaigas
80680080109	80680080109	Saullēkti
80680080275	80680080214	
80680080200	80680020255	Sedelnieki-Graši
80680090376	80680090376	Igaņi-Viešas-Bēršas
80680090431	80680090431	Ziedlauki
80680090079	80680020036	Kalmītes
80680090259	80680090259	Mazvičeikas
80680090061	80680090061	Priedītes
80680090072	80680090072	Šveices
80680090426	80680090426	Jaunklētņieki
80680090142	80680090142	Silpurmašas
80680090321	80680090595	Mazsmiltņieki
80680090317	80680090317	Bišubirzes
80680090102	80680090102	Ozolkungi
80680090267	80680090266	Lezdiņi
80680090224	80680020182	Kalna Raudas
80680090320	80680020036	Kalmītes
80680090008	80680090008	Lejasvičeikas
80680090364	80680090363	Bites-1
80680090029	80680090598	Vējotnes
80680090172	80680090172	Jaunpurmašas
80680090139	80680090138	Kalnbisenieki
80680090163	80680090163	Mazgraudiņi
80680090006	80680090006	Veizi
80680090247	80680090247	Purmašas
80680090585	80680090363	Bites-1
80680090217	80680090217	Apškalni
80680090315	80680090315	Bušelis-Rītiņi
80680090281	80680030143	

Application for the intended activity of the construction of the Nordic-Baltic Hydrogen Corridor in the territory of Latvia

Cadastral identifier	Cadastre number	Name of the property
80680090103	80680090103	Priednieki
80680090101	80680090101	Avotēni
80680090060	80680090060	Veides
80680090136	80680090136	Kalmes
80680090173	80680090173	Stambergi
80680090429	80680090148	Klētnieki
80680090346	80680020182	Kalna Raudas
80680090181	80680090180	Bitnieki
80680090194	80680090194	Jaunpakuļi
80680090318	80680090318	Bites
80680090326	80680050293	Autoceļš P8
80680090254	80680090217	Apškalni
80680090400	80680090400	Mežs pie Silpurmašām
80680090375	80680090375	Pakuļi-Kalnbisenieki
80680090490	80680090371	Birznieki-Kalna Melderīši
80680100006	80680100006	Jāņkalni
80680100094	80680100090	Inčukalna pazemes gāzes krātuve
80940010214	80940010009	Aparnieki
80940010182	80940010182	Vēstiņsalas
80940010078	80940010078	Stārasti
80940010084	80940010084	Laukāres
80940010079	80940010079	Brīvzemnieki
80940010075	80940010075	Vilnīši-1
80940010215	80940010216	Pļavas Aparnieki
80940010162	80940030178	Gaujas NP Siguldas novads
80940010048	80940010048	Ligeri
80940010055	80940010055	Lielpļavas
80940010046	80940010046	Ceplīši
80940010077	80940010077	Jaunuzoli
80940010152	80940010152	Gauja
80940010132	80940010132	Pūces
80940010044	80940010044	Druvnieki
80940010087	80940010086	Purziedi
80940010091	80940010091	Aparnieki - 2
80940010150	80940010150	Autoceļš V83
80940010158	80940010158	Gaujas NP Nurmižu rezervāts

Table 6. Land parcels crossed by the hydrogen pipeline study area in Saulkrasti municipality

Cadastral identifier	Cadastre number	Name of the property
80920050006	80920050006	Iņķi
80920050042	80920050009	Kurzemnieki
80920050101	80920050009	Kurzemnieki
80920050057	80920070259	Murjāņu mežs
80920050055	80920070259	Murjāņu mežs
80920050015	80920050011	Saulgoži
80920050085	80920070409	Murjāņi-Beltes

Application for the intended activity of the construction of the Nordic-Baltic Hydrogen Corridor in the territory of Latvia

Cadastral identifier	Cadastre number	Name of the property
80920050107	80920050109	Priežmalas
80920050068	80920070387	Gauja
80920060156	80920060155	Grāvmelderī -2
80920060198	80920060198	Virzas
80920060452	80920060452	Mežašalkas
80920060051	80920060051	Ozoli-2
80920060076	80920060076	
80920060442	80920060442	Egles
80920060375	80920060313	Jaunkrimulda- Baltmārtiņi
80920060094	80920060094	Gauri
80920060144	80920060144	Jaunstūrīši
80920060447	80920060447	Jaunceļš
80920060326	80920060326	Kalnalaņķas- Pērles
80920060199	80920060199	Avoti-2
80920060284	80920060284	Kalnsulīķas
80920060446	80920060446	Silziedi
80920060143	80920060143	
80920060444	80920060443	Mazupītes
80920060451	80920060445	Kārkli
80920060112	80920060112	Liberti
80920060298	80920060298	Ezerkalni - 2
80920060004	80920060004	Magones
80920060405	80920060115	Jaunrēdnieki
80920060148	80920060148	Mellotāji
80920060384	80920060384	Anceri
80920060080	80920060080	
80920060466	80920060467	Tīrumkrujas
80920060001	80920060001	Plaukas
80920060032	80920060032	Baloži
80920060286	80920060286	Krujas - 3
80920060312	80920060312	Loja- Krimuldas pag.
80920060330	80920040404	V79
80920060539	80920060285	Āriņas
80920060318	80920060318	Stoķi- Vīdzenes
80920060518	80920060371	Lejas sucas
80920070341	80920070497	Virsaīši-1
80920070438	80920070438	Ādamsoni-P
80920070241	80920070482	Kroņi
80920070570	80920070570	Mazie Kroņi
80920070422	80920040404	V79
80920070242	80920070482	Kroņi
80920070421	80920060327	Sulīķas- Plītes
80920070548	80920070259	Murjāņu mežs
80920070118	80920070118	Vīķi
80920070138	80920070138	Gaujasciems
80920070154	80920070151	Jaunkrimulda
80920070116	80920070116	Augšvilniši

Application for the intended activity of the construction of the Nordic-Baltic Hydrogen Corridor in the territory of Latvia

Cadastral identifier	Cadastre number	Name of the property
80920070342	80920070372	Gāzes novērošanas urbums Nr.105
80920070258	80920070259	Murjāņu mežs

Table 7. Land parcels crossed by the hydrogen pipeline study area in Ropaži municipality

Cadastral identifier	Cadastre number	Name of the property
80600050104	80600050104	Baltezera priežu sēklu plantācija
80600050018	80600050018	Stoķi
80600050004	80600050004	Gumzumi
80600050094	80600050094	Gāršu mežs
80840010062	80840010034	Ceplīšu mežs
80840010060	80840010034	Ceplīšu mežs
80840010051	80840010026	Ķēniņa mežs
80840010061	80840010034	Ceplīšu mežs
80840010052	80840010026	Ķēniņa mežs
80840010050	80840010063	Rail Baltica dzelzceļa teritorija B
80840010048	80840010038	CET
80840010046	80840010038	CET
80840010047	80840010049	CET-1
80840020106	80840020106	Ceļš Mintūži-Silmači
80840020074	80840020071	Kārļi
80840020071	80840020071	Kārļi
80840020096	80840020084	Insberģi
80840020110	80840020087	Laimas
80840030044	80840030044	Valtersalas-Mintūži
80840030008	80840030008	Priedes
80840030032	80840020098	Rīgas pilsētas meža fonds
80840040538	80840090339	Vidus mežs
80840040729	80840040020	Reipas
80840040730	80840040738	Meža Reipas
80840040609	80840040020	Reipas
80840040569	80840040568	Kalnslieču mežs
80840040608	80840040738	Meža Reipas
80840040572	80840040568	Kalnslieču mežs
80840040571	80840090339	Vidus mežs
80840040542	80840040541	Vizuļi
80840040562	80840020098	Rīgas pilsētas meža fonds
80840040579	80840010038	CET
80840040534	80840040534	V74
80840040578	80840010038	CET
80840040588	80840010038	CET
80840040199	80840040748	"Mežgrīņi"
80840040573	80840040573	Reipu mežs
80840040568	80840040568	Kalnslieču mežs
80840040533	80840050186	Autoceļš P3
80840040548	80840040548	Lobas mežs

Application for the intended activity of the construction of the Nordic-Baltic Hydrogen Corridor in the territory of Latvia

Cadastral identifier	Cadastre number	Name of the property
80840060324	80840020098	Rīgas pilsētas meža fonds
80840060326	80840060329	Kaktiņi A
80840060090	80840060090	
80840070037	80840020098	Rīgas pilsētas meža fonds
80840070085	80840070085	Mintūži-Silmači
80840070072	80840010038	CET
80840070070	80840080409	Gāzes vads
80840070038	80840020098	Rīgas pilsētas meža fonds
80840070042	80840020098	Rīgas pilsētas meža fonds
80840070043	80840020098	Rīgas pilsētas meža fonds
80840070069	80840080409	Gāzes vads
80840070078	80840070078	Silezers
80840070081	80840070081	Silringi
80840070001	80840070001	Sinode
80840070046	80840020098	Rīgas pilsētas meža fonds
80840070093	80840070093	Priežtakas
80840070086	80840070085	Mintūži-Silmači
80840070023	80840020098	Rīgas pilsētas meža fonds
80840070045	80840020098	Rīgas pilsētas meža fonds
80840070044	80840020098	Rīgas pilsētas meža fonds
80840070071	80840080409	Gāzes vads
80840070036	80840020098	Rīgas pilsētas meža fonds
80840070008	80840070008	Silakrogs
80840080283	80840080283	C2 Valtersalas-Mintūži
80840080224	80840020098	Rīgas pilsētas meža fonds
80840080361	80840080361	Jaunlīči-10
80840080411	80840080409	Gāzes vads
80840080358	80840080358	Jaunlīči
80840080362	80840080362	Jaunlīči-11
80840080273	80840020098	Rīgas pilsētas meža fonds
80840080354	80840080354	Jaunlīči-4
80840080366	80840080366	Jaunlīči-15
80840080365	80840080365	Jaunlīči - 14
80840080517	80840080365	Jaunlīči - 14
80840080275	80840020098	Rīgas pilsētas meža fonds
80840080764	80840080185	Ozolkalni
80840080613	80840080633	
80840080614	80840080185	Ozolkalni
80840080409	80840080409	Gāzes vads
80840080359	80840080359	Jaunlīči-8
80840080363	80840080363	Jaunlīči-12
80840080367	80840080367	Klusiņi
80840080192	80840080192	Ieviņas
80840080556	80840080636	
80840080186	80840080186	Tāivaldi
80840080557	80840080636	
80840080559	80840080636	

Application for the intended activity of the construction of the Nordic-Baltic Hydrogen Corridor in the territory of Latvia

Cadastral identifier	Cadastre number	Name of the property
80840080086	80840080077	Mintūži
80840080410	80840080409	Gāzes vads
80840080272	80840020098	Rīgas pilsētas meža fonds
80840080278	80840080278	Lielā Jugla
80840080333	80840080333	Ceļš Mintūži-Silmači
80840080450	80840080450	Jaunlīči-20
80840080193	80840080193	Trases
80840080101	80840080101	Līcīši
80840080364	80840080364	Jaunlīči-13
80840080203	80840080203	Palīgsaimniecība
80840080368	80840080083	Pīriņi
80840080442	80840080442	Jaunlīči - 16
80840120199	80840120023	Dāvidiņi
80840120076	80840120076	Ozolmuiža
80840120186	80840120053	Jaunsaulgoži
80840120099	80840120099	
80840120073	80840120073	Lejaskalni
80840120031	80840120031	Ventiņi
80840120100	80840120100	
80840120201	80840120027	Gudrinieki
80840120113	80840120113	Mazā Jugla
80840120162	80840120219	Mežupes A
80840120202	80840120220	Gudrinieki A
80840120187	80840120213	Jaunsaulgoži A
80840120177	80840120218	Kalnūlupi A
80840120064	80840120064	Aizes
80840120175	80840120005	Kalnūlupi
80840120066	80840120066	Priežu sēklu plantācija
80840120060	80840120060	Autoceļš A4
80840120059	80840170067	Autoceļš P4
80840120067	80840120066	Priežu sēklu plantācija
80840120161	80840120017	Mežupes
80840120176	80840120218	Kalnūlupi A
80840120050	80840120048	Kalnāres
80960010100	80960050091	Dzirnezers
80960040134	80960040134	gāzes vadu trase
80960040077	80960030409	Rīgas pilsētas meža fonds
80960040173	80960040173	Gāzes vada trase
80960040078	80960030409	Rīgas pilsētas meža fonds
80960040075	80960030409	Rīgas pilsētas meža fonds
80960050485	80960030409	Rīgas pilsētas meža fonds
80960050504	80960040173	Gāzes vada trase
80960050105	80960050105	Lejliepu mežs
80960050559	80960050496	Lielmežkalni
80960050109	80960030409	Rīgas pilsētas meža fonds
80960050486	80960030409	Rīgas pilsētas meža fonds
80960050482	80960030409	Rīgas pilsētas meža fonds

Application for the intended activity of the construction of the Nordic-Baltic Hydrogen Corridor in the territory of Latvia

Cadastral identifier	Cadastre number	Name of the property
80960050483	80960030409	Rīgas pilsētas meža fonds
80960050106	80960050106	Dzelzceļa Rīga-Ērgļi 17.km-18.km
80960050464	80960010404	V34
80960050503	80960040173	Gāzes vada trase
80960050505	80960040173	Gāzes vada trase
80960050481	80960030409	Rīgas pilsētas meža fonds
80960050462	80960050556	Rasēni
80960050506	80960050506	Augstsprieguma elektrolīnija
80960050513	80960040173	Gāzes vada trase
80960050465	80960050465	Burtnieku iela
80960050480	80960030409	Rīgas pilsētas meža fonds
80960050487	80960030409	Rīgas pilsētas meža fonds
80960050484	80960030409	Rīgas pilsētas meža fonds
80960050512	80960050512	Upesleju mežs
80960080011	80960080011	Strēlnieki
80960080217	80960080238	Starpgabals

Table 8. Land parcels crossed by the hydrogen pipeline study area in Salaspils municipality

Cadastral identifier	Cadastre number	Name of the property
80310070280	80310070017	Vecpelši
80310070821	80310070821	Trejsētas
80310070375	80310070471	Rail Baltica rezerves fonda zeme
80310070057	80310070057	Jaunkārļi
80310070368	80310070367	Mežāres
80310070388	80310070388	Labieši
80310070104	80310040040	Drabiņu mežs
80310070023	80310070023	Alberti
80310070393	80310070393	Jaunreipiņi
80310070797	80310070797	Priežavotu aleja
80310070371	80310070370	Trases meža kvartālos
80310070395	80310070393	Jaunreipiņi
80310070052	80310070052	Ozolkalni
80310070436	80310070436	
80310070007	80310070007	
80310070060	80310070060	Apvedceļš
80310070385	80310070385	Normaļi
80310070480	80310070099	Apvedceļš - Lakstīgala
80310070475	80310070352	Bārdaiņi
80310070024	80310070024	Irbītes
80310070379	80310070379	Autoceļš A4
80310070485	80310070103	Jaunbitāliņi 3
80310070083	80310170038	Strēlnieki - 1
80310070066	80310070066	Papardes
80310070481	80310070062	Baloži
80310070366	80310040040	Drabiņu mežs

Application for the intended activity of the construction of the Nordic-Baltic Hydrogen Corridor in the territory of Latvia

Cadastral identifier	Cadastre number	Name of the property
80310110140	80310110140	Valles 2
80310110137	80310110137	Virzuļi
80310110054	80310110001	Daugavaidas
80310110012	80310110012	Valles - 1
80310110048	80310110138	Puķes-2
80310110014	80310110014	Priežusils
80310110053	80310110132	Apvedceļš-stacija Saulkalne
80310110043	80310110019	Vecdzintari-1
80310110057	80310110025	Vecķeizari
80310110139	80310110034	Rīgas-Krustpils dzelzceļa 22.km-24.km
80310120096	80310120096	Daugava
80310150159	80310150159	Cielavas
80310150160	80310150160	Zīlītes
80310150475	80310150475	Skandi
80310150512	80310150512	Zeltjāņi
80310150151	80310150151	Leikas
80310150674	80310150175	Mežvidi
80310150007	80310150007	Lieldruvas
80310150683	80310150854	Veclieplejas
80310150163	80310150163	Damakšņi
80310150922	80310150922	Autoceļš P5
80310150001	80310150001	Kučas
80310150483	80310150483	Juglas
80310150417	80310150466	Kadillas
80310150921	80310150921	Jaunkučas-Tilti-Ērgļu dzelzceļš
80310150768	80310150768	Pavasari
80310150157	80310150157	Kaimiņi
80310150767	80310150767	Silavirši
80310150462	80310150462	Salaspils meži- 3
80310150555	80310150555	Jaunklausīņi
80310150772	80310150772	Dienvidi
80310150769	80310150769	Magones
80310150770	80310150770	Mežziedi
80310150771	80310150771	Pļavziedi
80310150766	80310150766	Silziedi
80310150178	80310150178	Saldnieki
80310150093	80310150093	TMB
80310150172	80310150172	Kaudzītes
80310150004	80310150004	Veltas
80310170094	80310170094	Gāzes vada kontroles punkts Spolītes
80310170284	80310170284	
80310170034	80310170034	Daugavas
80310170012	80310070015	Viesturi
80310170027	80310170027	Ausmiņas
80310170221	80310170123	Daugavmalas

Application for the intended activity of the construction of the Nordic-Baltic Hydrogen Corridor in the territory of Latvia

Cadastral identifier	Cadastre number	Name of the property
80310170368	80310170326	
80310170033	80310050036	Atvases
80310170367	80310170372	Rail Baltica dzelzceļa pirmā teritorija
80310170366	80310170372	Rail Baltica dzelzceļa pirmā teritorija
80310170225	80310170227	Dzintarkrasts
80310170148	80310090098	Autoceļš A6

Table 9. Land parcels crossed by the hydrogen pipeline study area in Ķekava municipality

Cadastral identifier	Cadastre number	Name of the property
80250020231	80250020225	Vadiņi
80250020024	80250020021	Jaundālderī - 2
80250020211	80250020182	Mašenu sils
80250020003	80250020001	Ritumi
80250020152	80250020073	Duburi
80250020197	80250070187	Reiskatu ceļš
80250020414	80250020416	Meža Ziediņi
80250020023	80250020021	Jaundālderī - 2
80250020012	80250020011	Jaundālderī - 1
80250020002	80250020001	Ritumi
80250020216	80250020216	Reiskatu ceļš
80250020042	80250020042	Jaunērgļi
80250020073	80250020073	Duburi
80250020115	80250020115	Kauguri
80250020114	80250090388	Robiņi
80250020532	80250070184	Lapsēnu ceļš
80250020232	80250020225	Vadiņi
80250020011	80250020011	Jaundālderī - 1
80250020610	80250020182	Mašenu sils
80250020191	80250010084	Autoceļš P89
80250020185	80250020182	Mašenu sils
80250020206	80250020042	Jaunērgļi
80250020006	80250020005	Vīganti
80250020336	80250020336	Mežpļavas
80250030096	80250020184	Siena tīrelis
80250030073	80250030073	Ennes
80250030084	80250030084	Rododendri
80250030069	80250030069	Māras
80250030021	80250030021	Avotnieki
80250030011	80250030011	Dekmeri
80250030030	80250030030	Tālie lauki
80250030012	80250030011	Dekmeri
80250030166	80250030020	Mazennes-1
80250030119	80250030119	Oglītes
80250030105	80250030105	Dekmeru ceļš

Application for the intended activity of the construction of the Nordic-Baltic Hydrogen Corridor in the territory of Latvia

Cadastral identifier	Cadastrre number	Name of the property
80250030190	80250020184	Siena tīrelis
80250030023	80250030023	Liel-Ennes
80250060307	80250060307	Lejmežvidi
80250080354	80250080031	Kalnvaivrogī
80250080355	80250080036	Lielvaivrogī
80250080353	80250080286	Mežvaivrogī
80250080215	80250080086	Druvaldi
80250080104	80250080104	Osiši-1
80250080106	80250080106	Kaijas
80250080103	80250080105	Vītoli-1
80250080259	80250070510	Elektrības
80250080100	80250080100	Jaunvidiņi
80250080102	80250080102	Pļavnieki
80250080268	80250080417	Brūveru ceļš
80250080151	80250080086	Druvaldi
80250080089	80250080089	Jauntreimaņi
80250080140	80250080140	Vectrimdas
80250080152	80250080152	Auzulejas
80250080428	80250080140	Vectrimdas
80250080086	80250080086	Druvaldi
80250080239	80250070185	Vārpu ceļš
80250080434	80250080022	Punkas
80250080090	80250080090	Grūbas
80250080179	80250080096	Ķipāļi
80250080436	80250070377	Rail Baltica dzelzceļa teritorija C
80250080441	80250080138	Jaunkauķi
80250080435	80250080447	Punku Avotplāva
80250110004	80250110637	Lejasavoti
80250110527	80250020163	Meži
80250110617	80250110617	Dižozoli
80250110615	80250110634	
80250110754	80250110755	
80250110598	80250110598	Oļupes
80250110717	80250110343	Baumaņ-Lapsas
80250110674	80250110667	Elektropārvade
80250110695	80250110599	Vidupes
80250110708	80250110397	Baložlapsas
80250110689	80250020163	Meži
80250110691	80250110768	Rail Baltica dzelzceļa teritorija 3
80250110673	80250020625	Rail Baltica rezerves fonda zeme
80250110184	80250110184	Lapsenes
80250110208	80250110208	Pāni-1
80250110483	80250070173	Cauņu masīvs
80250110688	80250110559	Galiņu ceļš
80250110663	80250110665	Vecozoliņu mežs
80250110626	80250110633	Rītamežs
80250110511	80250110511	Tīreļi

Application for the intended activity of the construction of the Nordic-Baltic Hydrogen Corridor in the territory of Latvia

Cadastral identifier	Cadastre number	Name of the property
80250110490	80250110490	Ārgaļi
80560010095	80560010095	Renceles
80560010079	80560010079	Amatas
80560010016	80560010016	Paegles
80560010187	80560010185	Sakaiņi - 3
80560010666	80560010043	Strēlnieki
80560010265	80560010265	Jaungeriņi
80560010140	80560010139	Vilnīši
80560010048	80560010789	Jaunsuitiņu meži
80560010151	80560010608	
80560010127	80560010127	Rūķi
80560010149	80560010149	Renceles-2
80560010057	80560010751	Vecsuitiņu mežs
80560010561	80560010560	Daugava
80560010825	80560010270	Renceļu Mežs
80560020337	80560020337	Upes
80560020312	80560020312	Virši
80560020310	80560020310	Cerības
80560020249	80560020249	Edžiņi
80560020242	80560010221	Liepkalni
80560020376	80560020371	Gāzes vada apkalmes stacija
80560020037	80560020037	Upes villa
80560020443	80560020443	Ferma Vedmeri
80560020365	80560010268	Starpgabals
80560020265	80560020265	Stūrīši
80560020401	80560020401	Ciniši
80560020375	80560020371	Gāzes vada apkalmes stacija
80560020309	80560020309	Apeņstīgas
80560020338	80560020338	Lapiņas
80560020509	80560020509	Valaiņi
80560020311	80560020311	Āres
80560020340	80560020340	Dūjas
80560020341	80560020341	Virzuļi
80560020313	80560020313	Jaunvedmeri
80560020015	80560020015	Kalna-Ķikuti
80560020380	80560010279	Autoceļš P85

Table 10. Land parcels crossed by the hydrogen pipeline study area in Bauska municipality

Cadastral identifier	Cadastre number	Name of the property
40500010536	40500010536	Uguntiņas
40500010538	40500010536	Uguntiņas
40500010537	40500010536	Uguntiņas
40500010108	40500010108	Ielejas
40500010455	40500030068	Mazzeltiņi-3
40500010564	40500010564	Janeikas 9
40500010187	40500010186	Vējkalni

Application for the intended activity of the construction of the Nordic-Baltic Hydrogen Corridor in the territory of Latvia

Cadastral identifier	Cadastre number	Name of the property
40500010001	40500010001	Jāneikas
40500010476	40500010476	Mēmele
40500010177	40500010177	Bajāri
40500010573	40500010562	Janeiku mazdārziņi
40500010565	40500010565	Puisāni
40500010561	40500010108	Ielejas
40500010566	40500010566	Janeikas 10
40500010608	40500010185	Upenieki
40500010563	40500010563	Janeikas 8
40500010548	40500010108	Ielejas
40500010189	40500010108	Ielejas
40500010560	40500010560	Janeikas 7
40500030063	40500030063	Ķemeri
40500030129	40500030129	Beciņas
40500030113	40500030113	Kausiņu lauks
40500030011	40500030011	Bebri
40500030152	40500030141	Mežmalas
40500030050	40500030050	Everitas
40500030080	40500010456	Janeikas-Bajāri
40500030143	40500030146	Peonijas
40500030054	40500030053	Lielramaņi
40500030112	40500030112	Liellauki-attīrīšanas ietaises
40500030018	40500030018	Jānīši
40500030130	40500030130	Beciņu lauks
40500030049	40500030048	Kausiņi
40500030045	40500030045	Karoļi
40500030092	40500030092	Brigītas
40500030017	40500030017	Bērici
40500030027	40500030027	Mežstūri
40500030038	40500030138	Uplejas
40500030046	40500030064	Kūlīši
40500030016	40500030053	Lielramaņi
40500030157	40500030093	Brunavas ceļš-Liellauki- Lejenieki-Bangas
40500030051	40500030051	Lietutiņi
40500030084	40500030084	Mazzeltiņi-4
40500030053	40500030053	Lielramaņi
40500030028	40500030028	Rušķi
40500030094	40500020212	V1022
40500030186	40500030114	Palejas-Lielkoki
40500050039	40500050039	Eglītes
40500050145	40500020215	Autoceļš A7
40500050170	40500050170	Līdakas
40500050204	40500050205	Jaunvirzas
40500050089	40500050089	Mežrozītes
40500050140	40500050076	Strautveiti
40500050121	40500050121	Puķuzirņi

Application for the intended activity of the construction of the Nordic-Baltic Hydrogen Corridor in the territory of Latvia

Cadastral identifier	Cadastre number	Name of the property
40500050153	40500050153	Līdaciņas
40500050113	40500050087	Dairi
40500050081	40500050081	Ceļmalas
40500050126	40500090211	A-7-Ziedoņi-Kociņi-Bērzaiņi
40500050080	40500050080	Laukrozes
40500050114	40500050189	Taivas
40500050119	40500050119	A-7-sporta komplekss Mūsa
40500050015	40500050015	Eģerti
40500050021	40500050021	Mālnieki
40500050093	40500020244	Krišjāni
40500050109	40500090322	Leduslāči
40500050151	40500020029	Dižvēji
40500050020	40500050020	Mākoņi
40500050030	40500050102	Jaunmārcēni
40500050077	40500050077	Stepāni
40500050187	40500050107	Lauki
40500050087	40500050087	Dairi
40500050049	40500050205	Jaunvirzas
40500050037	40500050037	Zundas
40500050019	40500050019	Senči
40500050120	40500050120	A7-Aužēji
40500050034	40500050034	Lielzundas
40500080030	40500080030	Pērles
40500080044	40500080044	Alleri
40500080006	40500080006	Lielkalni
40500080017	40500080017	Mikšas
40500080050	40500080050	Hariji
40500080025	40500080025	Kalēji
40500080046	40500080061	Lauvas
40500080038	40500090060	Aizupes
40500080049	40500080049	Stiķi
40500080061	40500080061	Lauvas
40500080029	40500080029	Skripsti
40500080048	40500080048	Zaķīši
40500080051	40500080051	Rūdolfi
40500080032	40500080032	Stankēviči
40500090211	40500090211	A-7-Ziedoņi-Kociņi-Bērzaiņi
40500090072	40500090072	Pūri
40500090090	40500090090	Jaunprinči
40500090320	40500090008	Āboliņi
40500090135	40500090060	Aizupes
40500090060	40500090060	Aizupes
40500090046	40500090046	Valteri
40500100053	40500100041	Jauninduļi
40500100041	40500100041	Jauninduļi
40500100018	40500100014	Ceraukstes Dvari
40500100023	40500100023	Upes Šlauteri

Application for the intended activity of the construction of the Nordic-Baltic Hydrogen Corridor in the territory of Latvia

Cadastral identifier	Cadastre number	Name of the property
40500100038	40500020214	Mūsa
40500100054	40500100001	Mucenieki
40500100011	40500100011	Kājiņas
40500100037	40500100037	Ogas
40520020302	40520020016	Meža Kaķi
40520020097	40520020097	Jaunstupītes
40520020178	40520020011	Naģi
40520020036	40520020036	Dzintari
40520020014	40520020013	Zeltkalniņi
40520020052	40520020052	Mierkalni
40520020053	40520020053	Maznaģi
40520020054	40520020054	Kābeles 1
40520020006	40520020005	Jaunmežēļi
40520020059	40520020320	Mazās Jaunstupītes
40520020123	40520020123	Dāliņi-Viesuļi
40520020301	40520020016	Meža Kaķi
40520020005	40520020005	Jaunmežēļi
40520020300	40520020016	Meža Kaķi
40520020013	40520020013	Zeltkalniņi
40520020063	40520060180	A7 šoseja-Rotkalni-A7 šoseja
40520020188	40520020077	Līči-Kūdras Galenieki
40520020134	40520020134	Kāres
40520020065	40520020062	Vecsprīdīši
40520020022	40520020022	Vidiņi
40520020009	40520020009	Jaundobuļi
40520020064	40520020066	Dāliņi
40520020026	40520020026	Bajāri
40520020133	40520020133	Pēterlauki
40520020177	40520020011	Naģi
40520020126	40520020126	A7 šoseja-Grantiņi
40520040260	40520040260	Viesturi
40520040334	40520040334	Veģi
40520040380	40520060180	A7 šoseja-Rotkalni-A7 šoseja
40520040324	40520040792	Papeles
40520040067	40520040067	Jaunstrujas
40520040619	40520040159	Memmēni
40520040636	40520040260	Viesturi
40520040126	40520040126	Mazlejas
40520040261	40520040260	Viesturi
40520040763	40520040767	Beiku lauks
40520040336	40520040621	Rasas 1
40520040329	40520040532	Jaunpūteļi
40520040169	40520040698	Bibuļi
40520040031	40520040031	Mežēļi
40520040532	40520040532	Jaunpūteļi
40520040731	40520040735	Munču kalns
40520040412	40520040071	Jurģi

Application for the intended activity of the construction of the Nordic-Baltic Hydrogen Corridor in the territory of Latvia

Cadastral identifier	Cadastre number	Name of the property
40520040107	40520040107	Cāļi
40520040310	40520040310	Pūteļi
40520040127	40520040126	Mazlejas
40520040484	40520040734	Pātarnieki
40520040584	40520040070	Beikas-Mazčikas
40520040422	40520040627	Mazmunču lauks
40520040423	40520040355	Ziedlapas
40520040639	40520040639	Memmēnu 1 starpgabals
40520040159	40520040159	Memmēni
40520040618	40520040618	Memmēni 1
40520040570	40520040570	V1018
40520040212	40520040212	Celmiņi
40520040341	40520040407	Smiltnieku kalte
40520040157	40520040155	Munči
40520040379	40520060180	A7 šoseja-Rotkalni-A7 šoseja
40520040764	40520040488	Beikas
40520040293	40520040684	Dūksnāji
40520060116	40520060217	Zaķiši, Codes pagasts, Bauskas novads
40520060045	40520060045	Eritas
40520060091	40520060091	Mazgaidas
40520060158	40520060198	Tukāni
40520060165	40520090299	Pauperi
40520060038	40520060257	Tīnas
40520060180	40520060180	A7 šoseja-Rotkalni-A7 šoseja
40520060101	40520060101	Jaunradugas
40520060152	40520090200	Dzenīši
40520060184	40520090200	Dzenīši
40520060099	40520090200	Dzenīši
40520060020	40520060214	Jāņi
40520060160	40520060160	Smiltiņi
40520060137	40520090200	Dzenīši
40520060106	40520060197	Eglāji
40520060104	40520060010	Gaidas
40520060157	40520060002	Panči
40520060135	40520090200	Dzenīši
40520060040	40520060074	Mazrūķīši
40520060142	40520060008	Kodes
40520060143	40520060143	Kļaviņas 7
40520060211	40520060211	Lapiņas
40520060146	40520060146	Pupiņas
40520060141	40520060141	Sūnas
40520060181	40520060181	Vizbulītes-Klidziņi
40520060167	40520090200	Dzenīši
40520060037	40520090200	Dzenīši
40520060140	40520060140	Sietiņi
40520060156	40520060156	Dāvīši

Application for the intended activity of the construction of the Nordic-Baltic Hydrogen Corridor in the territory of Latvia

Cadastral identifier	Cadastre number	Name of the property
40520060107	40520090112	Pārupes
40520060119	40520090112	Pārupes
40520060126	40520060126	Agneses
40520060024	40520060023	Gudžas
40520060027	40520060027	Meža Gudžas
40520060047	40520060047	Eritas 2
40520060010	40520060010	Gaidas
40520060128	40520060128	Guntu mežs
40520060026	40520060026	Vārpiņas
40520060046	40520090122	Dālderī
40520090568	40520090580	Astilbes
40520090390	40520040347	Dzeņi
40520090275	40520090275	Uzvaras
40520090134	40520090348	Jaunpauperi
40520090349	40520070007	Liepavoti
40520090598	40520090445	Autoceļš P87
40520090015	40520090056	Ērmaņi
40520090120	40520090120	Tupiņi
40520090119	40520090042	Vaidelotes
40520090073	40520090464	Dēliņi
40520090375	40520090375	Anniņmuiža
40520090439	40520050129	P88
40520090308	40520090195	Pakalnes
40520090043	40520090042	Vaidelotes
40520090099	40520090099	Lērumi
40520090282	40520090470	Cerokļi
40520090416	40520090416	Kuivas
40520090042	40520090042	Vaidelotes
40520090569	40520090042	Vaidelotes
40520090444	40520080036	Mēmele
40600070223	40600070223	Uzvaras mazdārziņi
40600070210	40600070210	Mierkalni
40600070339	40600070339	Uzvara-Rāvāji
40600070338	40600070338	Čikstes-muzejs-Kaulbrieži
40600070067	40600080014	Jaunskaidras
40600070250	40600070250	Dambis
40600070209	40600070209	Alises
40600070237	40600010066	Mūsa
40600070396	40600070024	Santas
40600070095	40600070431	Kaķīši
40600070225	40600070225	Rāvāju-Ruļļu lauks
40600070019	40600070019	Ritvari
40600070374	40600070019	Ritvari
40600100050	40600080014	Jaunskaidras
40600100070	40600100070	Virši-Kamarde
40600100023	40600100023	Grantskalni
40600100081	40600110032	Pierobežas josla

Application for the intended activity of the construction of the Nordic-Baltic Hydrogen Corridor in the territory of Latvia

Cadastral identifier	Cadastre number	Name of the property
40600100034	40600100085	Griķi
40600100052	40600100052	Viršu fregates lauks
40600100022	40600100022	Skujas
40600100029	40600100005	Kokles
40600100001	40600100001	Kalnarāji
40600100054	40600100054	Viršu lauks
40640020196	40640020196	Autoceļš A7
40640020093	40640020093	Murāni
40640030069	40640030025	Nimrodi
40640030067	40640030067	Baibuļi
40640030058	40640030058	Stari
40640030091	40640030094	Mālkalni
40640030059	40640030059	Evas
40640030102	40640030102	Lielķēniņi
40640030057	40640030057	Klaidas
40640030206	40640050046	Valsts mežs 4064-1
40640030089	40640020198	V1010
40640040114	40640040114	Jaunlibārti
40640040343	40640040206	GRS Ziemeļi
40640040366	40640040004	Silenieki
40640040115	40640020024	Vaivari
40640040179	40640020196	Autoceļš A7
40640040021	40640040021	Lejasdimzas
40640040204	40640030027	Dobuļi
40640040276	40640040276	A7-Jānumi-Vīleikas-V7
40640040053	40640040053	Mazdimzas
40640040206	40640040206	GRS Ziemeļi
40640040181	40640040181	Ūdeles
40640040266	40640030101	A7-Brīviņi-Dimzukulns-Daugavas-A7
40640040259	40640040259	Vilnīši
40640040236	40640040066	Plintiņi
40640040166	40640040071	Jaunmucenieki
40640040387	40640040388	Augštūrumi
40640040156	40640040156	Lazdaines
40640040052	40640040052	Gailenes
40640040406	40640040407	Kroglauki
40640040386	40640040040	Lieldimzas
40640040103	40640040103	Kastaņas
40640040031	40640040031	Veclibārti
40640040071	40640040071	Jaunmucenieki
40640040069	40640040069	Imanti
40640040116	40640040116	Mazstūrīši
40640040105	40640040105	Dominats
40640040394	40640040396	Arodi
40640040047	40640040432	Iespēju Zemīte
40640040107	40640040107	Ebibijas

Application for the intended activity of the construction of the Nordic-Baltic Hydrogen Corridor in the territory of Latvia

Cadastral identifier	Cadastre number	Name of the property
40640040393	40640040058	Saulgoži
40640070378	40640070117	Kanbergi
40640070068	40640070068	Vecvārpas
40640080070	40640080070	Meža Debesis
40640080007	40640100034	Meža Ķuži
40640080269	40640080028	Meža Baloži
40640080270	40640080028	Meža Baloži
40640080019	40640080019	Kalna Mežs
40640080320	40640080024	Kārļi
40640080258	40640080042	Dzelzceļa Jelgava-Krustpils 192km-194km
40640080266	40640080266	Denīzes
40640080173	40640020160	Bajāri
40640080063	40640080094	Mežāži
40640090210	40640090052	Jaunineši
40640090211	40640090211	Lejaskalnu ceļš
40640090052	40640090052	Jaunineši
40640090189	40640060614	Autoceļš P93
40640102475	40640102475	Spēlmaņi 1
40640102230	40640102230	Lejas Dārznieki
40640102717	40640100363	Punktiņi
40640102037	40640103406	Mikusi
40640100815	40640103466	Zunduri
40640103673	40640100309	Timmas
40640100333	40640130046	Madariņas
40640100287	40640100286	Vītoli
40640100832	40640100832	Mazkalniņi
40640100806	40640100806	Veczelles
40640100366	40640130046	Madariņas
40640100347	40640100347	Senlejas
40640100147	40640100147	Dukuri
40640100400	40640100400	Renebušas
40640100808	40640110163	Laucinieki
40640101721	40640101721	Vecdārziņi
40640100354	40640100167	Dālderu
40640100152	40640100152	Žubītes
40640100789	40640120407	Audrieši
40640103540	40640103549	Lielūdrī
40640103395	40640102223	Namedas
40640102732	40640102732	Ineses
40640101059	40640100347	Senlejas
40640100841	40640100841	Gaismas
40640100167	40640100167	Dālderu
40640101846	40640101846	Erceni
40640100820	40640102223	Namedas
40640102031	40640102029	Dīķīši
40640100383	40640100383	Mazlīči

Application for the intended activity of the construction of the Nordic-Baltic Hydrogen Corridor in the territory of Latvia

Cadastral identifier	Cadastre number	Name of the property
40640100679	40640100347	Senlejas
40640100021	40640100021	Lidiņi
40640100584	40640103725	Piestraumes
40640100377	40640100377	Ezerēni
40640102253	40640100363	Punktiņi
40640100671	40640100347	Senlejas
40640102250	40640102250	Ivetas
40640100813	40640100813	Gruntnieki
40640100701	40640100701	Lejaskalni
40640103742	40640070258	V1039
40640102374	40640102374	Rūsiņi 2
40640102707	40640110284	Rudzīši
40640104113	40640102389	Kokorieši
40640103724	40640060616	Iecava
40640103734	40640102279	Autoceļš V7
40640100566	40640100576	Upeslīči
40640110195	40640110195	Strēlnieki
40640110181	40640110181	Billes
40640110036	40640110036	Valdemāri
40640110204	40640110204	Veczemgaļi
40640110419	40640110419	Smailītes
40640110317	40640110317	Ēriksoni
40640110171	40640110171	Palejas
40640110177	40640110177	Rūžiņas
40640110010	40640110010	Lapsēni
40640110118	40640110118	Zvejniekkalni
40640110007	40640110007	Kalnmētras
40640110193	40640101062	Lieltaurēni
40640110109	40640110109	Taurēni
40640110096	40640110096	Rūnas
40640110119	40640110119	Pipari
40640110008	40640110009	Bērziņi
40640110332	40640110332	Klajumi
40640110396	40640110396	A7-Palejas-Lapskalni-Roņi
40640110079	40640110079	Cimmermaņu-Rūķi
40640110080	40640110079	Cimmermaņu-Rūķi
40640110302	40640020196	Autoceļš A7
40640110420	40640110420	Kalnmētras Vētras
40640140060	40640140060	Mierkalni
40640140090	40640140090	Margrietīņas
40640140016	40640140016	Lejasūdri
40640140339	40640140339	Ripiņas
40640140443	40640120194	V1040-Roņi-Tāmas-Renceles-A7
40640140017	40640140017	Birztaliņas
40640140092	40640140339	Ripiņas
40640140094	40640140094	Kalna Ūdri